

★ WHY THE WASTE:

Envisioning a path towards Food Waste Reduction in Michigan Schools





THE TEAM



CLC Fellow: Mateo Garcia – UM SEAS

Technical Advisor: Danielle Todd – Make Food Not Waste

Mentor: Kayla McDaniels – Plymouth-Canton Community Schools

Mentor: Zach Michels – Canton Township

THE PROBLEM

FOOD WASTE

- Largest waste stream by weight in Michigan
- Producer of methane emissions
- Significant need to increase landfill lifespan



THE PROBLEM

CANTON & LANDFILLS

- Limited Space
- End of life on existing contract
- Residential Compost Drop-off



TEACH 'EM YOUNG!



Why Waste Reduction in Schools



- Ability to form new habits
- Create engaged citizens
- Establish a sense of community & Wellness






THE GOALS

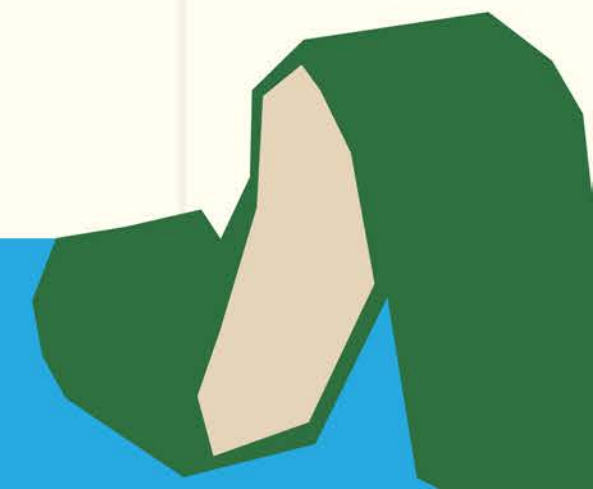


- 1. Identify waste management strategies that can be effectively carried out within P-CCS Schools**
 - 2. Create a resource documenting existing literature and experiences with implementation**
- 
- 



✦ THE PROCESS ✦

- Assess Resources
 - Waste Audit
 - Provide Reduction Solutions
 - Begin Engagement
- 



WASTE AUDIT

- **Assess Food waste quality and characteristics**
- **Dig through trash**
- **Take home Cereal!**



WASTE AUDIT

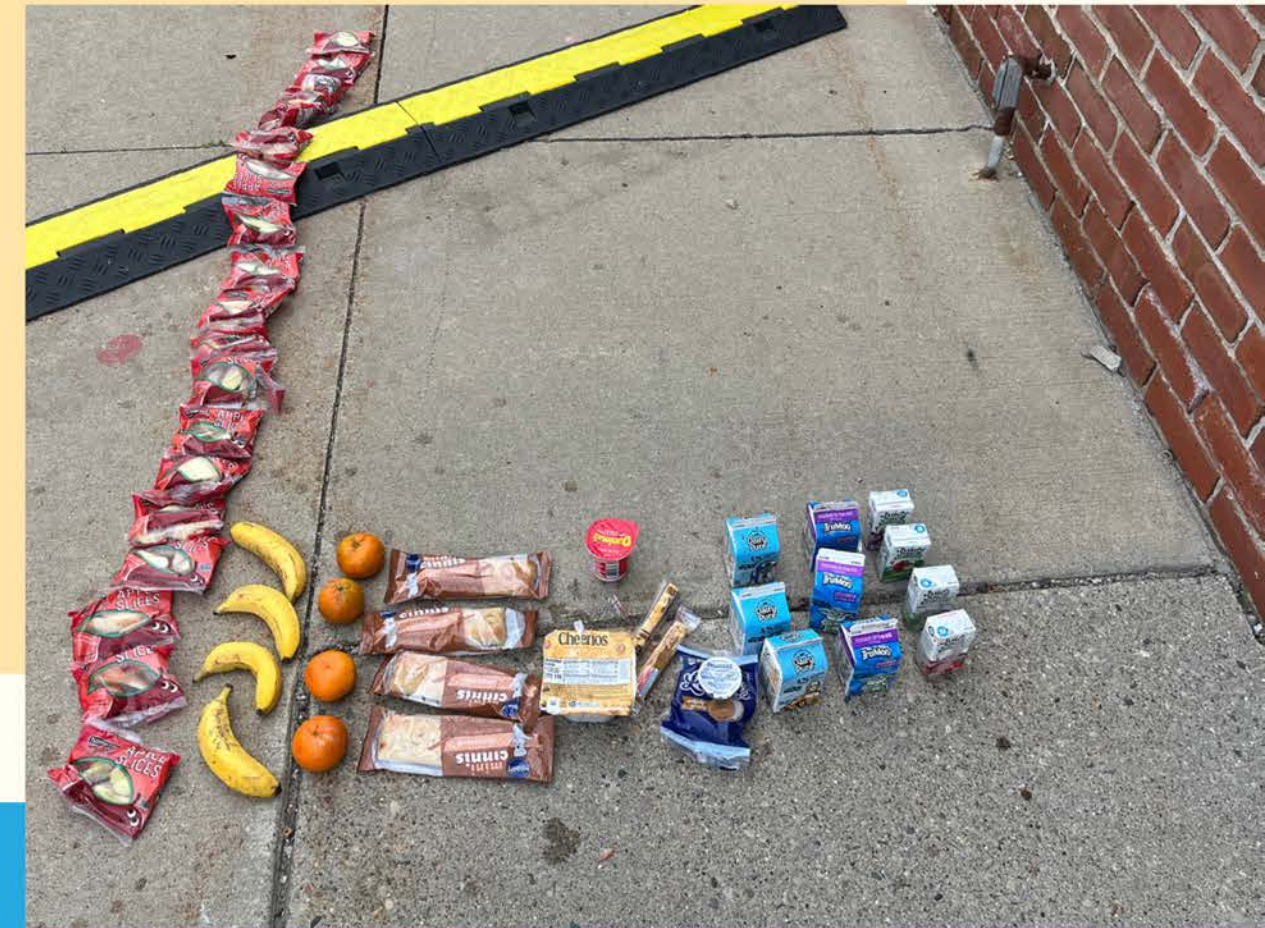
- **Assess Food waste quality and characteristics**
- **Dig through trash**
- **Take home Cereal!**



RESULTS

- **Students wanted longer lunch time**
- **Between 6-12 tons of food waste per year***
- **Very little kitchen waste**

*Based on a 2 day representative sample





END PRODUCTS

- Waste Reduction Guide
- Waste Audit Report

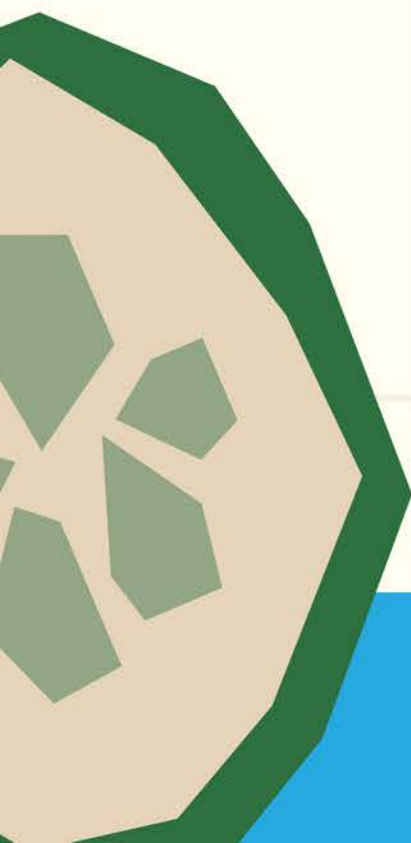


**Why The Waste:
Food Waste Reduction Guide for
Michigan Schools**
Steps, tips, and a case study to empower change in
districts small and large

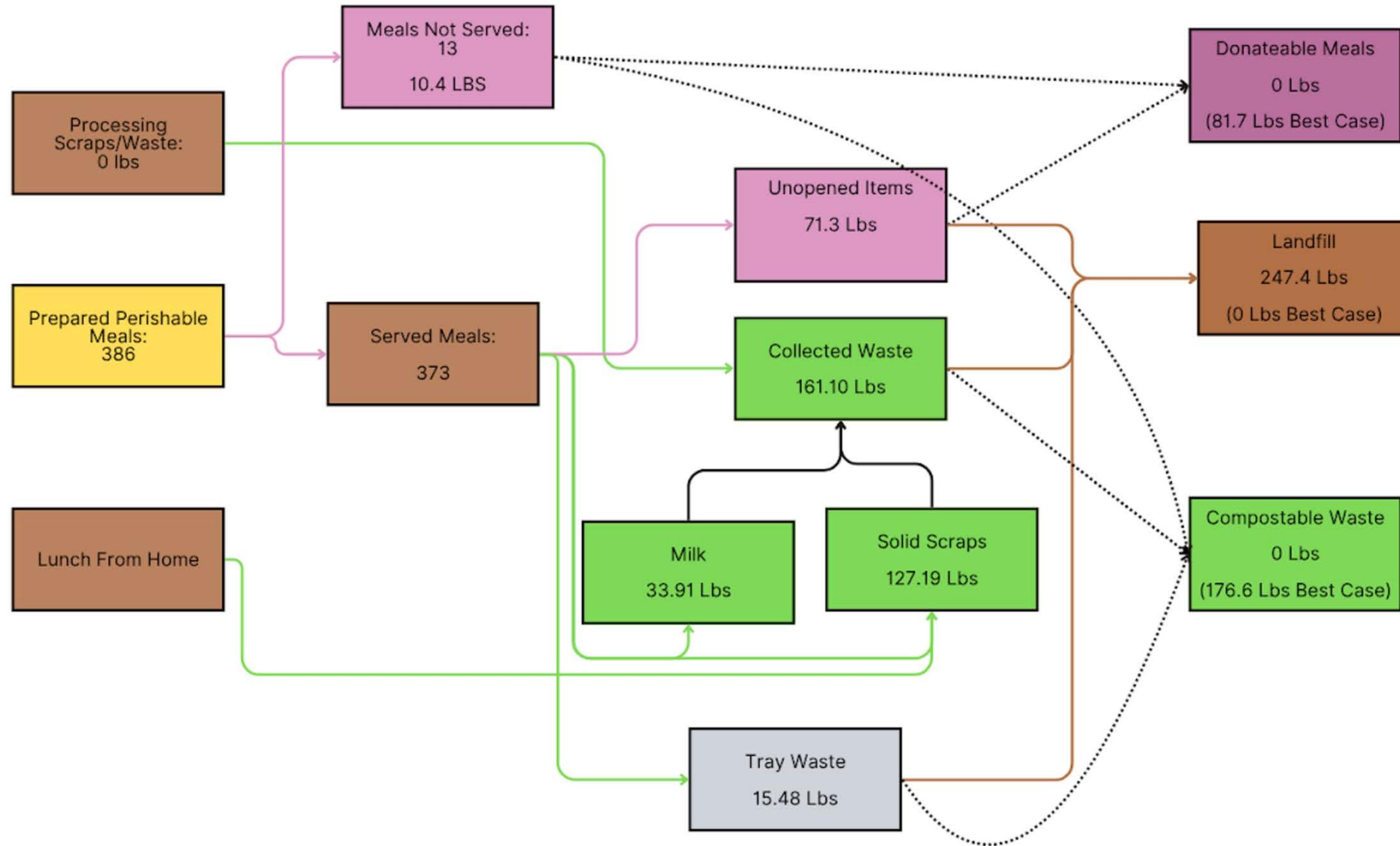


Bentley Waste Audit Report

Mateo Garcia
06/09/2025



Bentley Elementary School Food Waste Audit: Lunch (May 30-June 2)



SOLUTIONS

- **Take easy wins**
- **Share tables in the classroom***
- **Need to inform teachers**



SOLUTIONS

- **Public-private Partnerships**
- **Utilizing existing Municipal**





Connections

MAKE FOOD
NOT WASTE





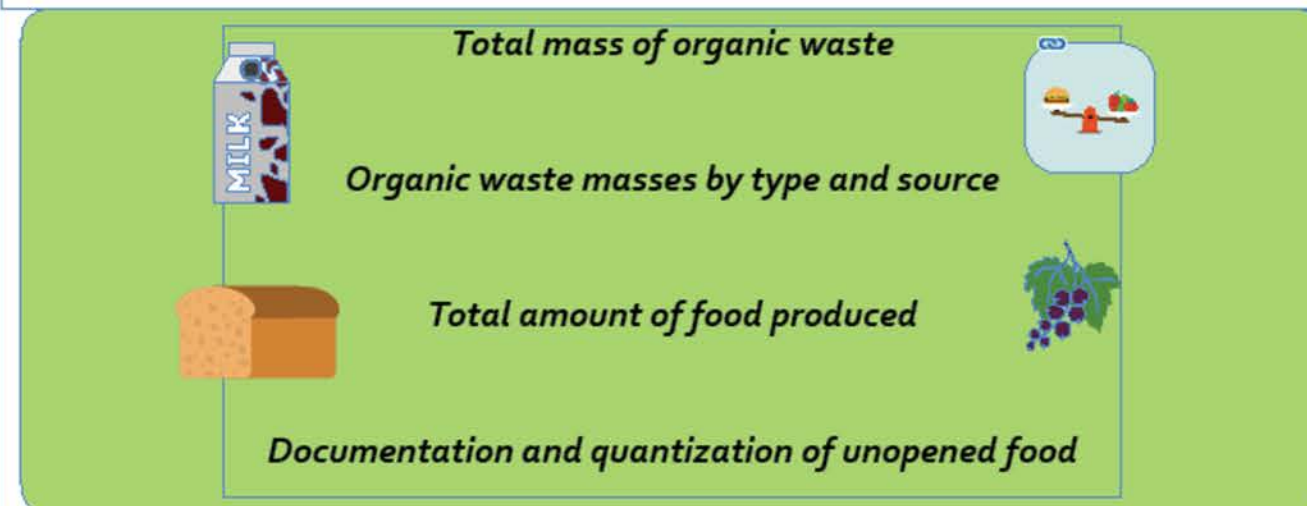
USING THE GUIDE

- Existing Resources
 - Process Guidance
 - Case Study Examples
 - Sample Documents
- 
- 
- 
- 

USING THE GUIDE

Food Waste Audit

A food waste audit is aimed at assessing the sources and types of food waste within a building or institution. In general the criteria measured during an audit should at least include:



Comprehensive instruction for conducting a food waste audit are provided by the EPA's resource: **Guide to Conducting Student Food Waste Audits: A Resource for Schools**

The guide outlines the steps needed to be taken to conduct a food waste audit, although different schools may have different capabilities when it comes to available man-hours, lunch room timing, and available space for sorting. For example, while it can be beneficial to separate waste streams not just by material but by menu item, there may not be sufficient assistance during an audit to do so.

Implementing Changes

Once the main sources of waste are identified, decisions should be made regarding strategies for improvement. In this section, we will review how to optimize the impact of food waste reduction strategies, and offer some suggested solutions at each level. For each solution, we will provide a subjective rating on the logistic ease and financial burden of the solution. This list serves as a general guideline, and is not comprehensive. For more information, check out these resources listed below:

Utilizing the waste reduction hierarchy

In this section, we will break down the available solutions to you category by category using the waste reduction pyramid. While efficiency also depends on the effort needed to implement a solution, the pyramid prioritizes the most energy efficient methods for waste diversion. Districts should pick and choose which solutions work best for themselves, but utilizing the pyramid is an important mental exercise when planning waste reduction.



NEXT STEPS FOR P-CCS

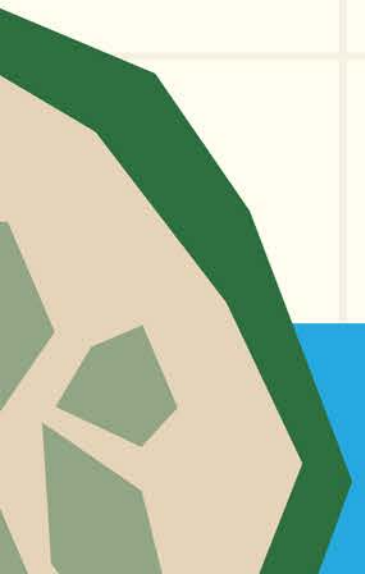
- **Assemble a stakeholder network**
- **Faculty Working Groups**
- **Planning professional development days**



NEXT STEPS FOR MICHIGAN



- **Assessing potential partnerships**
- **Prioritizing education**
- **Establishing positions within districts for sustainability**



LUNCH

TIME!