

The background image shows a river with a dam in the middle ground. In the foreground, there is a playground with a circular structure and a wooden deck. The scene is framed by trees, with a large tree on the right side. The sky is blue with some clouds.

HOW TO IMPLEMENT SUSTAINABILITY LEADERSHIP IN MUNICIPAL MANAGEMENT

Samuel Howard, MPA
Eastern Michigan University

Acknowledgments

Prepared for: City of Rockford and Michigan Municipalities

Mentors:

- Thad Beard – City Manager, City of Rockford
- Mindy Minder – Chairperson, Rockford Sustainability Committee
- Cheryl Scales – City Commissioner, City of Rockford

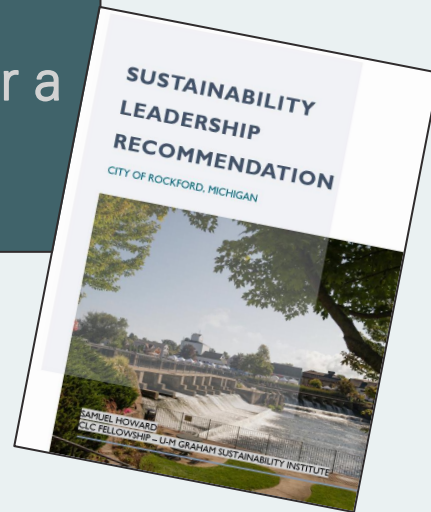
Technical Advisor: Jan Culbertson – Leadership Chair, Ann Arbor/Washtenaw 2030 District

Special Thanks to Sarah Lee, Jean Sadler, Fatimah Bolhassan, Nina Mendelson, and other CLC Fellows



Purpose

Help the City of Rockford develop plans to implement sustainability leadership by providing structural recommendations for a municipal position



Help other communities in Michigan develop plans to implement sustainability leadership by providing an options guide for a sustainability manager position



Major Challenges for Small Communities

Budget
Restrictions



Human
Asset Capacity



Public
Support





Leadership Options

Full-Time

Part-Time

Volunteer

Combined

Regional

Consultant



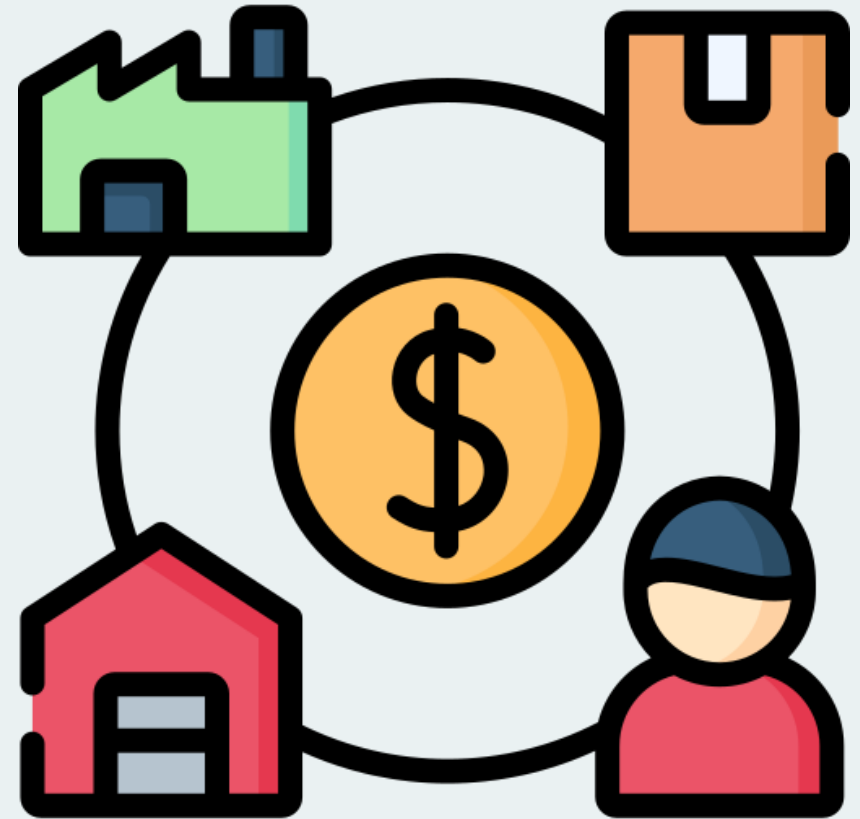
Interlocal Agreements Provide for Regional Collaboration to Address Goals

- Mitigates Cost Through Cost Sharing
- Allows Easy Sharing of Initiatives



Consultants Can be Tailored to the Municipality's Needs

- Allows Cost Savings
- Provides Specialized Insight



Combining Roles Provides the Most Cost Savings

- Provides a Smooth Transition
- Can be Structured Several Ways





Recommendation for the City of Rockford

Part-Time

Consultant

Combined

COMBINED



An Internal Green Team Best Helps Rockford Achieve its Goals While Addressing its Challenges

SUSTAINABILITY LEADERSHIP RECOMMENDATION

CITY OF ROCKFORD, MICHIGAN



SAMUEL HOWARD
CLC FELLOWSHIP – U-M GRAHAM SUSTAINABILITY INSTITUTE





Thank you
Questions?