

July 26th, 2024



FERNDALE



DOWNTOWN WASTE MANAGEMENT TOOLKIT

An Informational Guide
by

CLCF Annie Dudley



MICHIGAN DEPARTMENT OF ENVIRONMENT, GREAT LAKES, AND ENERGY



GRAHAM INSTITUTE 1

ACKNOWLEDGMENTS

**Catalyst Leadership Circle Fellow: Annie Dudley -
Masters of Urban and Regional Planning, Michigan
State University**

**Prepared for: City of Ferndale and Michigan Local
Governments**

**Mentor: Logan Applebee - Zero Waste Manager, City
of Ferndale**

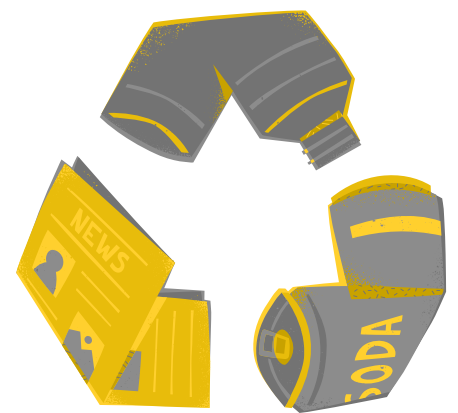
**Advisor: Alex Haddad - Communications Manager,
Graham Sustainability Institute**

July 26th, 2024

**This material is based upon work supported by the
Department of Energy and the Michigan
Department of Environment, Great Lakes, and Energy
under Award Number EE0008653 as part
of the Catalyst Communities program. Find this
document and more about the CLC Fellowship
that supported this project at graham.umich.edu/clcf.**

Table of Contents

| | |
|----------------------|----|
| Cover page | 1 |
| Acknowledgments | 2 |
| Table of Contents | 3 |
| How Collection Works | 4 |
| Why Recycle | 8 |
| Trash | 9 |
| Recycling | 14 |
| Cardboard Recycling | 17 |
| FOGs Recycling | 18 |
| Food Waste Reduction | 21 |
| FAQs | 23 |
| About the Project | 24 |
| Works Cited | 25 |



How Collection Works

Overview

In dense downtown areas, space constraints often prevent individual establishments from having private waste and recycling bins. Local governments, like in the City of Ferndale, address this by creating communal waste hubs through contracts with various haulers, allowing businesses to share collection services.



(Photo courtesy of Ferndale Sanitation Officer Roger Long)

Example of Waste Hub (Withington St.)

In waste hubs, various waste streams like mixed recycling, fats, oils, and greases (FOGs), refuse, and sometimes cardboard, are collected. Due to the high volume of certain materials like cardboard, separate collections are made to prevent overflow, ensuring a clean and safe disposal area.

Recycling rules vary by municipality due to different sorting and processing systems at local facilities. Even neighboring cities may have different guidelines. That's why it's important to learn your community's specific recycling rules.

Ferndale Site Map



Image Source: Recycling Resource Systems

Ferndale Central Business District Compactor locations: 1 : Vester Compactor, 2: E Troy Compactor, 3: Withington Compactor, 4: W Troy Compactor, 5: Dot Compactor, 6: W Breckenridge Dumpsters

The City of Ferndale has several commercial waste disposal and recycling locations in the Central Business District (CBD). Four are compactors (Como's, E Troy, W Troy, Withington), and one is a dumpster (W Breckenridge). These locations ensure businesses can access waste collection without crossing Woodward Ave or 9 Mile Rd.

How Collection Works

After waste is placed in the appropriate receptacle in Ferndale, haulers collect the material. Refuse compactors are emptied at least once a week, while cardboard dumpsters and mixed recycling containers are serviced more frequently.



Waste Hub Pick Up Information

| Container Location | Use of Container (Trash or Recycling) | Container Size | Number of Containers |
|--------------------|---------------------------------------|----------------|----------------------|
| W Troy | | | |
| Withington | | | |
| Vester | | | |
| East Troy | | | |



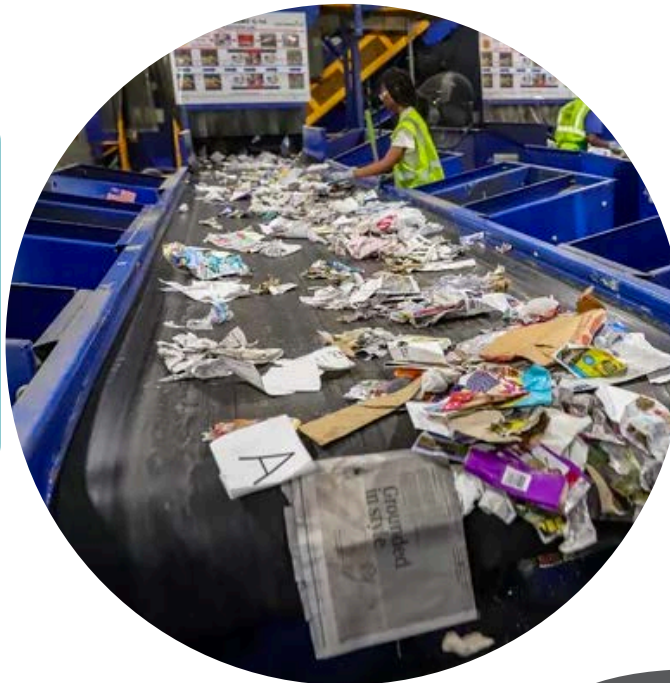
After recycling is collected from waste hubs, it is taken to a Materials Recovery Facility (MRF) for processing. Here, materials are separated by type (plastic, glass, metal, paper, cardboard) and sold to manufacturers for further refinement into post-consumer products.

How Collection Works

New Life Beyond the Bin

Once the material has been sorted and bailed at a MRF, it is then sold to a manufacturer who then further refines the commodity into a usable post-consumer product.

Paper is soaked, heated, and screened to remove impurities, then fed through a machine to create sheets that are dried and used to make new products.



Glass is broken down into crushed pieces before it is heated, turned into liquid, and poured into molds to make new products.

Plastic is sorted by type, cut into flakes and cleaned to remove contaminants, then formed into larger pellets that are later melted and molded to make new products.

Aluminum items are shredded, melted and cooled in a block form called ingot so that they can be cut into sheets and used to make new products.

Information provided by EGLE's FAQ on General Recycling Information

The cleaner the items that go into the recycling bin, the better the recycled material they make for development of new products.

WHY RECYCLE?

CONSERVE NATURAL RESOURCES

Recycling reduces the need to extract resources such as timber, water, and minerals for new products.



CLIMATE CHANGE

According to the most recent EPA data, the recycling and composting of municipal solid waste (MSW or trash) saved over 193 million metric tons of carbon dioxide equivalent in 2018.

ENERGY SAVINGS

Recycling just 10 plastic bottles saves enough energy to power a laptop for more than 25 hours. To estimate how much energy you can save by recycling certain products, EPA developed the individual Waste Reduction Model (iWARM).



How to Dispose of **Trash**

Ferndale contracts with Car Trucking to collect their solid waste and recycling from the central business district. Guidelines for all commodities collected are based on SOCRRA's requirements, which you can find linked here, through the QR code at the bottom, or depicted on page 11.

1 The first step in waste disposal is to identify which waste hub is closest to you (See Pg 5 for Map).

2 Trash should be taken to the compactor in a secure bag and should only contain acceptable refuse (no recyclables, food, or hazardous waste).

Once visual check is complete, close compactor door/dumpster lid. If using the compactor, do not be alarmed by any loud, mechanical noises that may follow. This is normal.

4

After placing trash in compactor, look around to ensure that there is no trash or debris on the ground.

3



SOCRRA's Guidelines Found Here

Scan this QR code
to learn how to
use a trash
compactor!



City of Ferndale, MI Trash Compactor Tutorial

No views • 3 minutes ago

City of Ferndale Trash Compactor Tutorial By: Annie Dudley, 2024 Catalyst Leadership Circle Fellow Logan Applebee, Zero Waste Systems Manager, City of Ferndale Alexandra Haddad, Communications...

**The following pages
contain visual trash and
hazardous waste guides
to be used for broader
physical distribution
inside Central Business
District establishments**

Central Business District Trash Compactor Guide

DO NOT PUT THE FOLLOWING IN TRASH



Pallets/shipping containers



Landscape materials



Liquids



**Construction debris
(wood, carpet, drywall,
cement, etc.)**



Furniture



**Appliances (TVs,
Microwaves, Fridges)**

Violations will result in fines:

1st: \$100

2nd: \$200

3rd: Misdemeanor and \$500

How to: Dispose of Hazardous Waste



Electronics



Batteries



Lightbulbs



Paints



Cleaners



Propane

Some materials require special handling for safe disposal and should not be placed in the trash. These items are known as Household Hazardous Waste or HHW.

Drop Off Options

Call SOCRRA's Special Household Hazardous Waste Hotline to make a collection appointment at 248-288-5153.

ERG Environmental Services will take hazardous materials, no appointment required, Monday-Friday. ERG also accepts electronics at their location.

For further assistance on hazardous waste management, contact Ferndale's Zero Waste Coordinator Logan Applebee at lapplebee@ferndalemi.gov or 248-336-4236.

How to Recycle Right

The Central Business District's mixed recycling bins are located adjacent to refuse compactors/dumpsters. Cardboard is taken up in a separate container at the Vester, E. Troy, W. Troy, and Withington waste hubs. SOCCRA's recycling guidelines are linked [here](#), through the QR code at the bottom, or depicted on page 15.

1 The first step in proper recycling is to identify which of the five waste hubs are closest to you (See Pg 5 for Map).

2 Recycling should always be placed inside of cart/dumpsters loose and bag free.

4 Close the lids on the cart/ dumpster after disposing of materials. This is to prevent water and animals from getting inside of the bins.

3 Be sure to remove any packing materials that might not be recycleable from inside of cardboard boxes! Remember to flatten all boxes to ensure efficient use of space

SOCRRA's Guidelines Found Here



**The next page(s) contain
visual guides to be used
for broader physical
distribution inside CBD
establishments detailing
acceptable procedure**

CENTRAL BUSINESS DISTRICT MIXED RECYCLING GUIDE

Recycling Preparation

- Clean, dry, & empty
- Goes in roll-off cart
- Cardboard NOT accepted in roll-off cart. Please place in cardboard dumpster if applicable.



Mixed Paper



Metal



Aseptic
Containers



Plastic Bottles
and Tubs



Glass Bottles

NOT RECYCLABLE



Syringes



Plastic Bags



Food Waste



Styrofoam



Textiles



Lightbulbs



Batteries



Electronics



Ceramic Dishes



Central Business District Cardboard Recycling Guide

Cardboard dumpsters located adjacent to parking lot waste rooms

Remove and dispose of all packing materials

Must break down boxes

Close dumpster lids to keep cardboard dry



How to Dispose of FOGs

Fats, Oils, and Greases (FOGs) are collected in containers adjacent to the refuse compactors/dumpsters. When disposing of FOGs, it is important to keep the following in mind:

1

Make sure that kitchen staff are properly equipped with the correct tools to get the job done. This looks like investing in easy-to-clean 5 gallon pails and transport containers with wheels.

2

Do not overfill FOG containers and use covers. If containers are overfull or lack covers, the FOG may spill over and get into storm drains.

4

Before taking FOGs from inside a restaurant to the outdoor dumpster, conduct a visual check to make sure no contaminants have fallen into the transport bucket.

3

Make your own spill kits with absorbent material such as absorbent pads or kitty litter. Keep these spill kits well marked and accessible for cleaning spills.

For more information, check out previous CLC Fellow Audrey Wilfong's FOG management guides through this QR code!



**The next page(s) contain
visual guides to be used
for broader physical
distribution inside CBD
establishments detailing
acceptable procedure**

Central Business District Grease Recycling Guide

1) Let grease cool.

2) Pour into a transport container.

3) Dispose of grease in can (next to trash compactor).

4) Used Cooking Oil (UCO) is the only acceptable material to be placed in grease can.



Forbidden Items



Water



Food Matter



Animal Bones



Cleaning Agents



Rags



Rubber Gloves

Food Waste Reduction in Restaurants



Why?

In America, we throw away between 30-40% of the food supply, equivalent to over 161 billion dollars worth in food each year (EPA, 2021).

How to Reduce?

Prevention

Track and Analyze Waste:

- Take a visual audit of your business's waste and try to identify items that could otherwise be recycled or composted.

Design Menus with Food Waste Reduction In Mind:

- Use different parts of a single ingredient in multiple menu items.
- Seek uses for food prep trim.

Optimized Quantities:

- Offer multiple portion choices; e.g. offering regular or "lite" portions, with the option for refills.

Recovery

Know Your Laws:

- Use ReFED's Food Waste Policy Finder. (refed.com/policy) to identify existing liability protections and tax incentives for food donations in your community.

Identify Local Partners:
Find your local food bank [here!](#)



Recycle

Co-location:

- Place compost bins next to trash and recycling receptacles within the kitchen.
- Display compost guidelines next to compost bins.

Dispose of Fats, Oils, and Greases Properly:

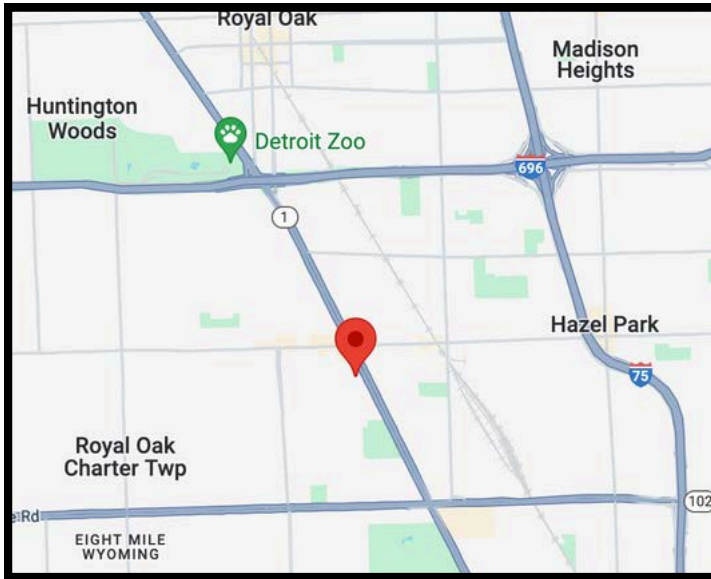
- Make sure all Fats, Oils, and Greases are deposited in the recycling bin outside to recycle them into biodiesel!

Feed Animals:

- Consider partnering with a local farmer to feed their livestock with restaurant food scraps!

Food Donation Locations

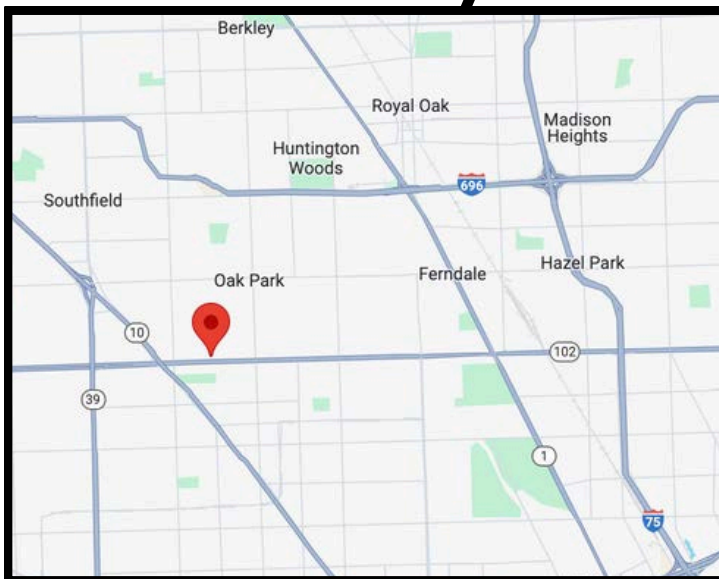
Forgotten Harvest



15000 W. Eight Mile Rd.
Oak Park, MI 48237
248-967-1500

Monday-Friday 9 a.m.-5 p.m.

Zion Lutheran Food Pantry



143 Albany St.
Ferndale, MI 48220
248-398-5510 ext. 101
Appointment Required
3rd Wednesdays
9 a.m. -10:30 p.m.

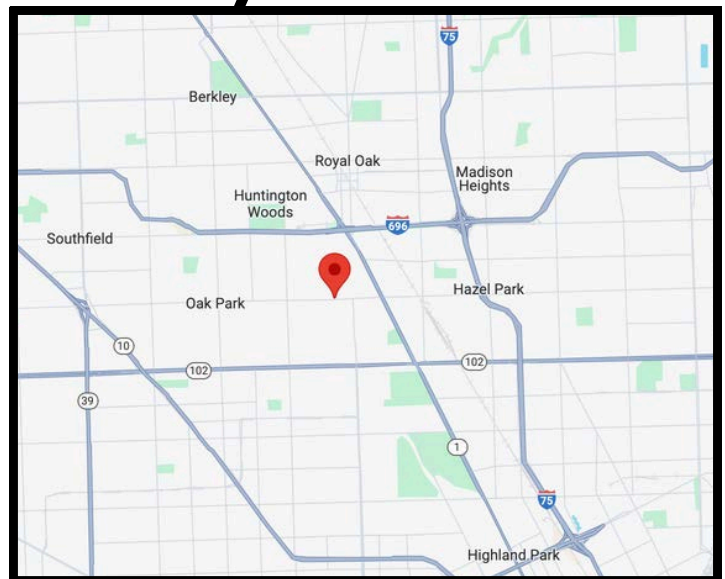
Detroit Distribution Center



2131 Beaufait Street
Detroit, MI 48207
313-308-0628 ext. 284

Monday-Friday 7 a.m.-4 p.m.

Renaissance Vineyard Church



1841 Pinecrest Dr.
Ferndale, MI 48220
248-545-4664 ext. 2
Appointment Required
1st and 3rd Mondays
4 p.m.-6 p.m.

Frequently Asked Questions

Q: How do I dispose of hard to recycle items / hazardous waste?

A: You can visit the SOCRRA Waste Wizard tool and search for the item you're looking for to find disposal instructions!



Q: Where do I send un-used food?

A: Find your local food bank [here!](#)



Q: What are Michigan's food donation laws?

A: Use ReFED's Food Waste Policy Finder to identify existing liability protections and tax incentives for food donations in your community.



Q: Where can I find more information on how to properly handle Fats, Oils, and Greases?

A: Check out previous CLC Fellow Audrey Wilfong's handling guide:



Q: Who should I contact if I have questions, comments, or concerns about waste management and sustainability in Ferndale?

A: Logan Applebee! He is the current Zero Waste Manager.

Phone: 248-336-4236

Email: lapplebee@ferndalemi.gov

About the Project

Significance

The purpose of this project is to provide the City of Ferndale support in fulfilling the recommendations of their 2020 Downtown Waste Reduction and Recycling Master Plan to provide a waste education strategy for their central business district (CBD). As it stands, CBD establishments do not have a consistent waste management education system, contributing to unnecessary confusion and contamination. Businesses are often unaware of disposal guidelines and struggle to maintain an employee base that is well versed in the CBD's waste management practices. These problems are further extrapolated by the poor design and distribution of Ferndale's recycling and waste guides.

Goals

This project seeks to create a user-friendly CBD waste management educational guide, consisting of multimedia tools and extractable posters for the City of Ferndale. Ultimately, this project aims to achieve an increased recycling rate, decreased contamination rate, and broader awareness towards the waste cycle amongst Ferndale businesses.

What Work Is This Building Upon?

In 2020, the City of Ferndale commissioned Resource Recycling Systems (RRS) to help them create a long-term sustainable plan for waste and recycling in the downtown/central business district. RRS identified an educational gap within Ferndale's current solid waste management system, concluding that education regarding the waste areas is provided ad hoc to businesses when they initially move into the CBD, and information regarding diversion opportunities and benefits is not continually provided. With business turnover and the need for reminders, education cannot be one and done, but rather needs to be conducted regularly. This fellowship project seeks to create actionable change guided by the recommendations of this 2020 report.

Works Cited

Electronics Recycling – SOCRRA. (n.d.). SOCRRA.
<https://www.socrra.org/electronics>
Recycling raccoons. (2023, July 13). Recycling
Raccoons. <https://recyclingraccoons.org/>

Find your local food bank | Feeding America. (n.d.).
Feeding America.
<https://www.feedingamerica.org/find-your-local-foodbank>

General-Recycling-Information. (n.d.).
<https://www.michigan.gov/egle/faqs/recycling/general-recycling-information#:~:text=Many%20Michigan%20communities%20provide%20curbside,for%20use%20in%20new%20products>

Recycling Basics and Benefits | US EPA. (2023, November 27). US EPA.
<https://www.epa.gov/recycle/recycling-basics-and-benefits#:~:text=Benefits%20of%20Recycling-,Environment,and%20minerals%20for%20new%20products>