



Planning for Long-term Urban Forestry Management

**CATALYST
COMMUNITIES**

M
**GRAHAM
SUSTAINABILITY
INSTITUTE**
UNIVERSITY OF MICHIGAN

EGLE
MICHIGAN DEPARTMENT OF
ENVIRONMENT, GREAT LAKES, AND ENERGY

Project Team



**Megan
McLaughlin**

**CLC Fellow, UM-SEAS,
Geospatial Data Science**



**David
Norwood**

**Deputy Director, Canton
Municipal Services**



Zach Michels

**Associate Planner,
Canton Planning
Services**



Joe Sulak

**Parks and Recreation
Superintendent, Grand
Rapids**

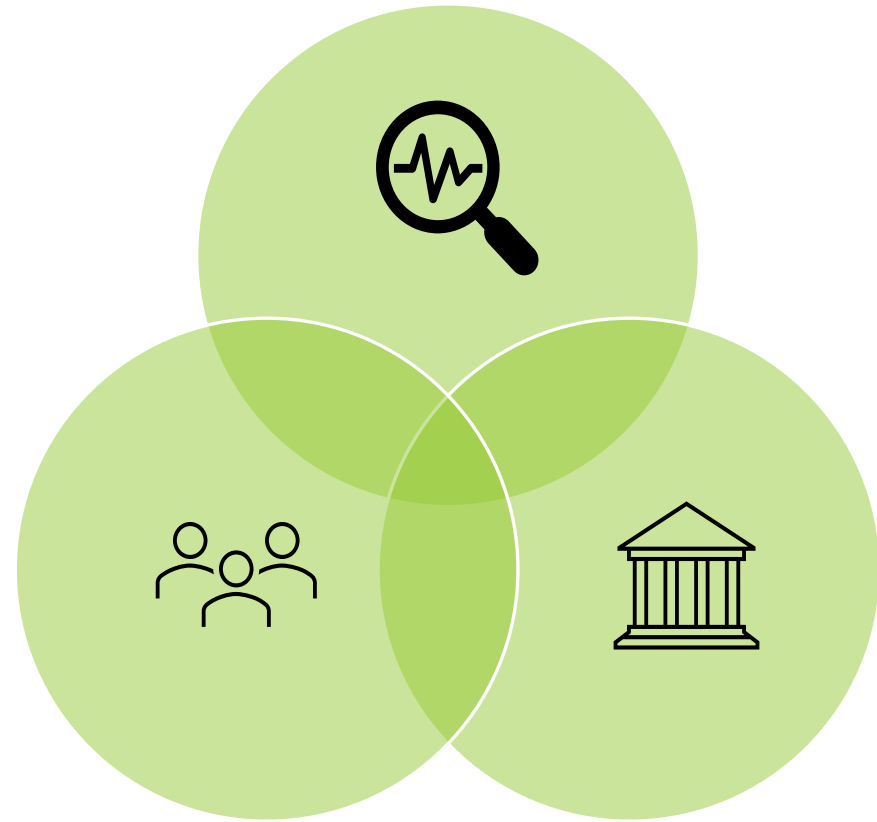
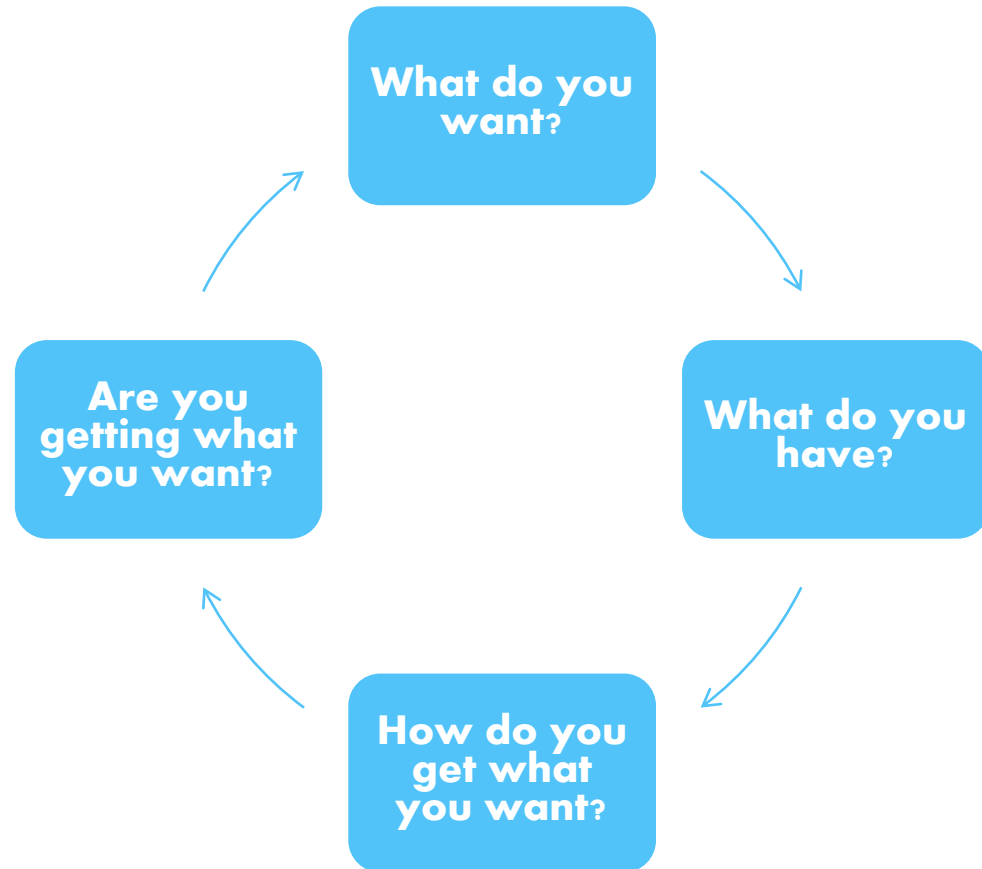
The background of the slide is a dark, atmospheric photograph of a large, ancient-looking tree. Its thick, gnarled trunk and sprawling branches are silhouetted against a slightly lighter, misty background. The tree's roots are exposed and spread out across the ground. The bottom third of the image is covered by a solid green gradient bar. The title 'Root of the Problem' is centered in the upper half, in a large, white, sans-serif font. A thin white horizontal line is positioned directly below the text.

Root of the Problem

Canton Community has Initiated Several Urban Forestry Activities Preparing for Long-term Planning



Long-term Urban Forestry Planning Focuses Efforts and Determines Support Needs



Embarking on Solutions

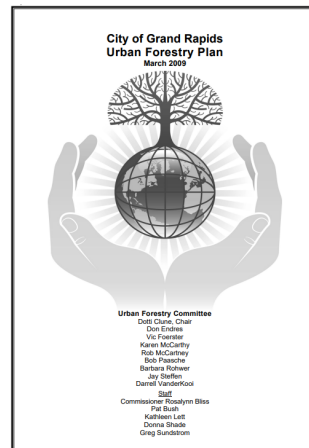


Every Urban Forest Requires Unique Planning but Similar Planning Strategies are Apparent

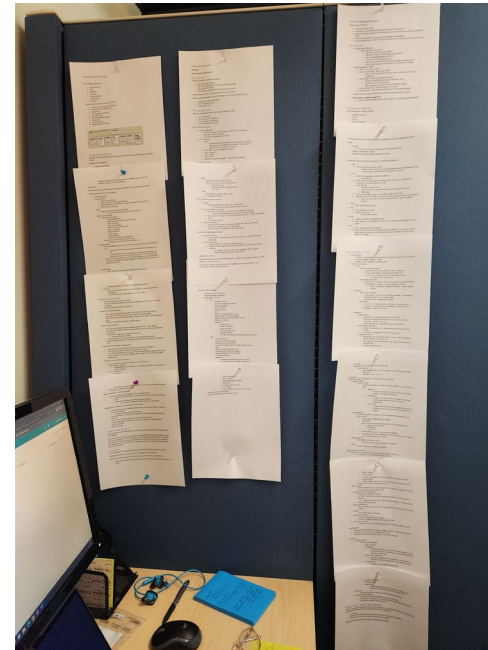
URBAN FORESTRY MASTER PLANS



PITTSBURGH URBAN FOREST MASTER PLAN
A Road Map for the Effective Management of our Urban Forest



TOOLS AND RESOURCES





**Friends
of the ROUGE**



**WAYNE STATE
UNIVERSITY**



**American
Forests™**

Interest in Urban Forestry Planning is Increasing in Michigan but Guidance is Limited to Rural Settings



A Tool to Help Urban Communities Branch Out

Planning for Urban Forestry

A guide for municipalities



COMPILED BY: Megan McLaughlin

CREATED: July 2023



Guidance for Effective, Long-term Urban Forest Management Plans

Pre-Plan

Assess

Strategize

Develop

Monitor

Parks & Recreation

Local Forestry Organizations

Department of Public Works

Zoning Boards

Maintenance Contractors

**Downtown Development
Authority**

Master Planning Committee

“The purpose of the Canton Urban Forestry Master Plan is to lay the groundwork for developing a comprehensive urban forestry program, address routine maintenance coordination and increase tree canopy coverage.”



Phase 1: Pre-Planning **Establishing the Parameters for Plan Development**

Phase 2: Assess

Investigating State of Your Urban Forest



HISTORY



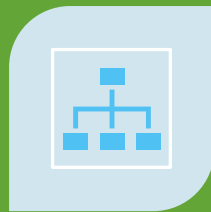
**ENVIRONMENTAL
FACTORS**



**TREE
INVENTORY &
CANOPY COVER**



MANAGEMENT



**PLANS, POLICIES
& REGULATIONS**



COMMUNITY

Species Distribution of Street Trees

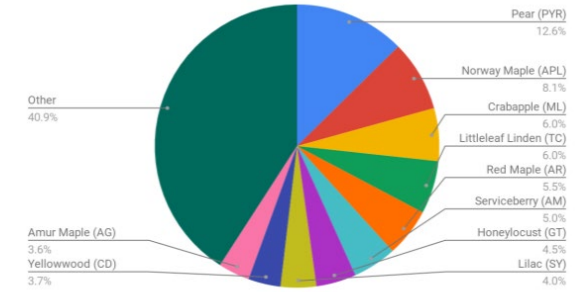
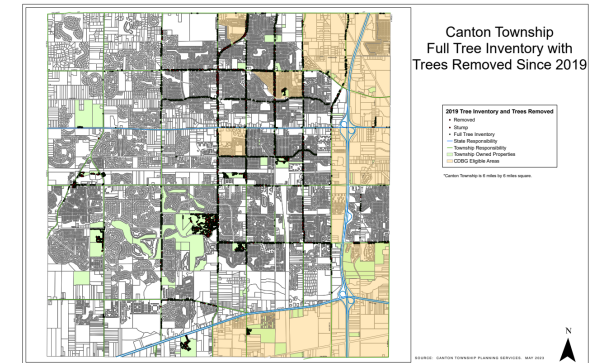
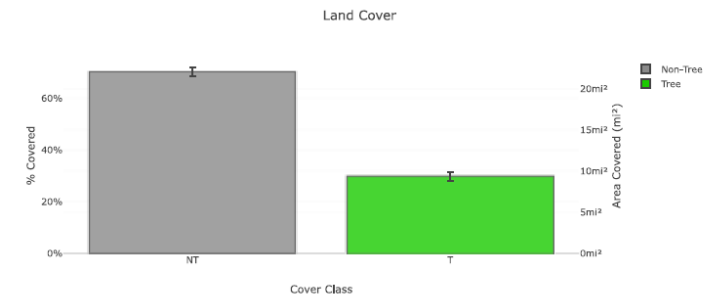
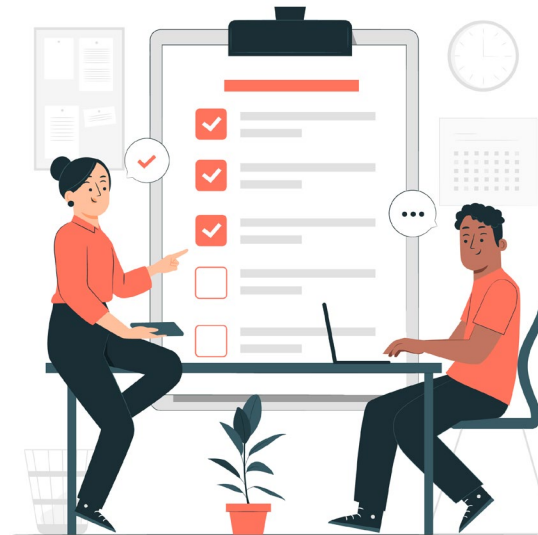


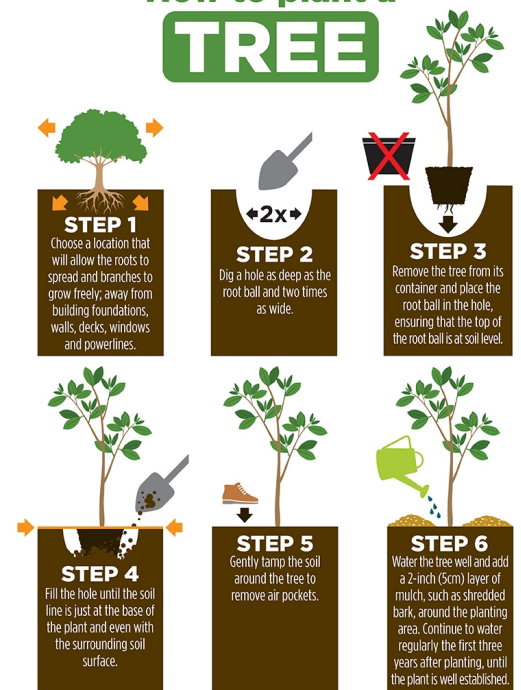
Figure 2: Species distribution for street trees in Canton Township, MI



Canton Launches Community Engagement Activities



How to plant a TREE



Phase 3: Strategize Organizing Needs Evident from Assess Phase

- Visioning
- Scope
- Needs Assessment
- Goal-setting
- Justification
- Implementation
- Budget
- Monitoring Plan



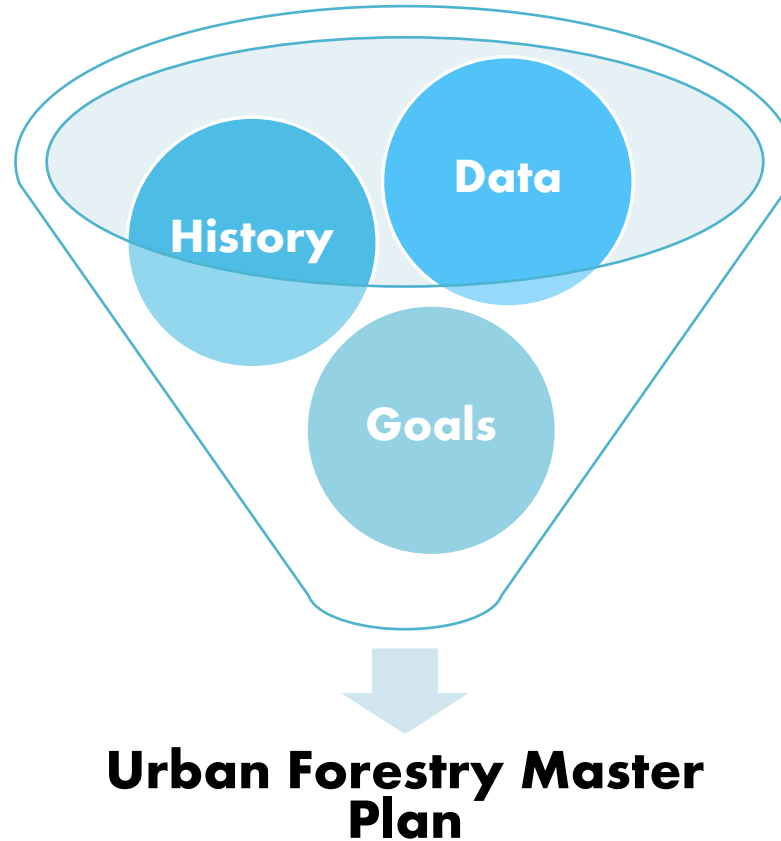
Goal 1:				
Strategy 1.1:				
Actions:	Cost/Funding Source	Performed by:	Completion date:	Priority level:
1.1.1:				
1.1.2:				



Plan Outline



- ☐ Executive Summary
- ☐ Statement of purpose and scope
- ☐ Tree Canopy and Inventory Summary
- ☐ Management and Community Summary
- ☐ Goals/Implementation strategy
- ☐ Budget Justification
- ☐ Evaluation Mechanism
- ☐ Appendices



Phase 4: Develop
Using Information Collected to Compile the Plan

Phase 5: Monitor **Improving Upon Plan Following** **Implementation**

GOAL

Community diversifies tree population

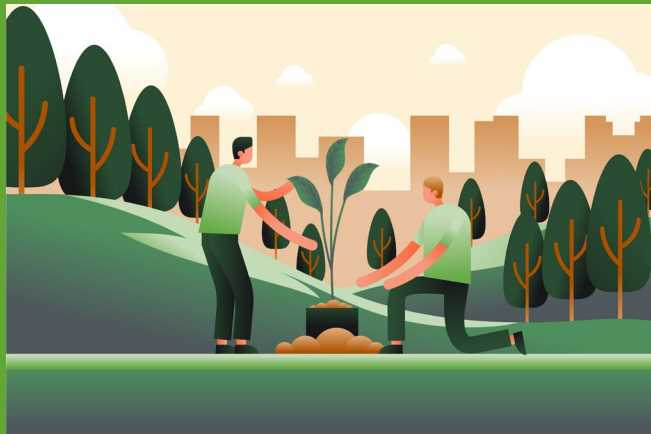


3-YEAR EVALUATION

Community works to plant diversity of tree species age and type annually



Guidance, Usability and Helpful Resources



Monitoring

- How will you assess whether implemented strategies are moving you toward reaching your goals?
- Which trees or activities need to be monitored?
- What additional factors need to be monitored?
- Will you be monitoring the entire population or a sample?
- Will data be collected continuously or at specific intervals?
- Do some data need to be collected in a specific season or time of year?
- How frequently will you do data summary and analysis?
- Who will collect, analyze, and use the information?
- How much staff time will be needed?
- How and where will the data be stored?

--

Strategy	Monitoring Plan for Actions
1.1	1. 2.

RECOMMENDED RESOURCES

Title	Section	Summary
Visioning	Visioning	A guide for a collaborative, creative practices that leads to a shared community vision and common values.
Ordinances Best Practices	Regulations	Introduction to the myriad of regulatory tools available to assist in the proactive management of the urban forest.
Making Your Community Forest-Friendly	Regulations	A worksheet designed to help communities review and revise regulations to conserve and

**Trees be with
you! - ZM**

ANY QUESTIONS?

EMAIL: MEGANMCL@UMICH.EDU

