



Geographic Location	Northeast Lake Erie
Population	123,363
Government Structure	Chief Administrative Officer System
Per Capita Income	\$31,370 (CAD)

City Fact Sheet: Kingston, Ontario

The City of Kingston is located on the north-east coast of Lake Ontario and at the head of the Saint Lawrence River. The city strives to become “Canada’s Most Sustainable City” and through the 2010 release of the Sustainable Kingston Plan, has developed sustainability goals for both the community and the corporation. In 2014, Kingston released a Climate Action Plan. While the plan primarily focuses on curbing Kingston’s greenhouse gas emissions and enhancing sustainability throughout the city, it also includes recommendations for how to make Kingston more resilient in the face of climate change.

UNIQUE FACTS

- Kingston is part of the Sustainability CoLab which launched in early 2014 and provides support, resources, and networking opportunities for communities in Ontario who are working on sustainability initiatives.
- Released in June 2014, the Kingston Climate Action Plan is made up of community-developed strategies to reduce greenhouse gas emissions and build resiliency.

CLIMATE IMPACT

7	Fewer Days Below 0°C (from 1951-2012)
56%	Increase in Heaviest 1% of Precipitation Events (from 1951-2010)
47%	Increase in Days with 1.25” or More Precipitation (from 1951-2012)
45%	Increase in Annual Precipitation (1951-2012)

OPPORTUNITIES

- The city collects a 1% tax which is reserved for infrastructure improvement projects and can be leveraged funding for climate adaptation strategies.
- In addition to municipal plans and support, the Sustainability CoLab brings together stakeholders from across the region to tackle environmental challenges, including in the private sector.

CHALLENGES

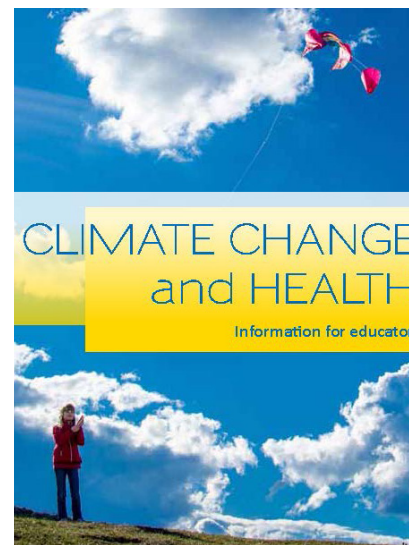
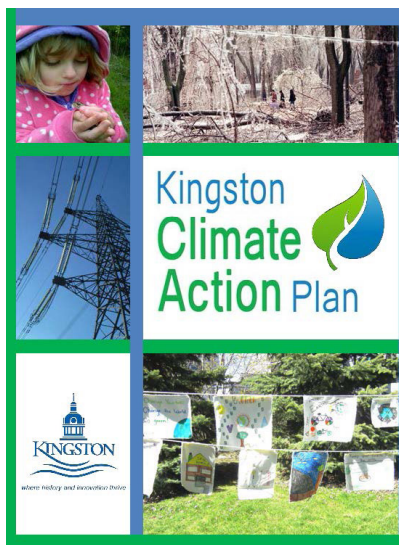
- Despite popular support for numerous sustainability focused programs, the city is still working to better integrate climate adaptation into these ongoing projects.
- The city is still working to identify and implement meaningful strategies for addressing the needs of the most vulnerable populations in the community.

ADAPTATION PROJECTS:

Adaptation project outcomes were aimed at supporting the objectives outlined in the Sustainable Kingston Plan and the strategies described in the Kingston Climate Action Plan. These include contributing to the development of a corporate culture of long-term asset management and sustainability planning and fostering community awareness of increasing health effects associated with climate change.

HEALTH IMPACT ASSESSMENT AND PUBLIC PLANNING PROJECT

The Kingston, Frontenac, Lennox, and Addington (KFL&A) Public Health staff completed an assessment and education tool on health related impacts of climate change. With this new body of knowledge developed by KFL&A, the staff created a brochure, new webpage content, and a fifth grade level lesson plan to educate students on health risks associated with climate change.



SHADE TREE PLANTING PROJECT

Shade trees were planted on city-owned public property in place of damaged trees. Trees were planted in areas that would enhance the city's new express bus routes as a means for encouraging ridership and addressing heat vulnerable meeting spaces. This project was also supported by matching a grant from the RBC Finance Blue Water Project.

EMERGENCY MANAGEMENT MAPPING PROJECT

The city helped the Emergency Management-Common Operational Picture (EM-COP) develop new tools, techniques and applications to better understand a wide variety of climate scenarios, extreme weather, and other environmental situations. Some of the new enhancements included a heat emergency GIS layer for use during extreme heat and smog advisories as well as a road network GIS layer for determining which routes have been impacted.



City staff and leaders participating in shade tree planting.