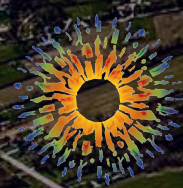


Watershed Assessment of Detroit River Loads to Lake Erie

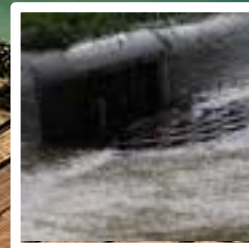
Brief overview of key findings



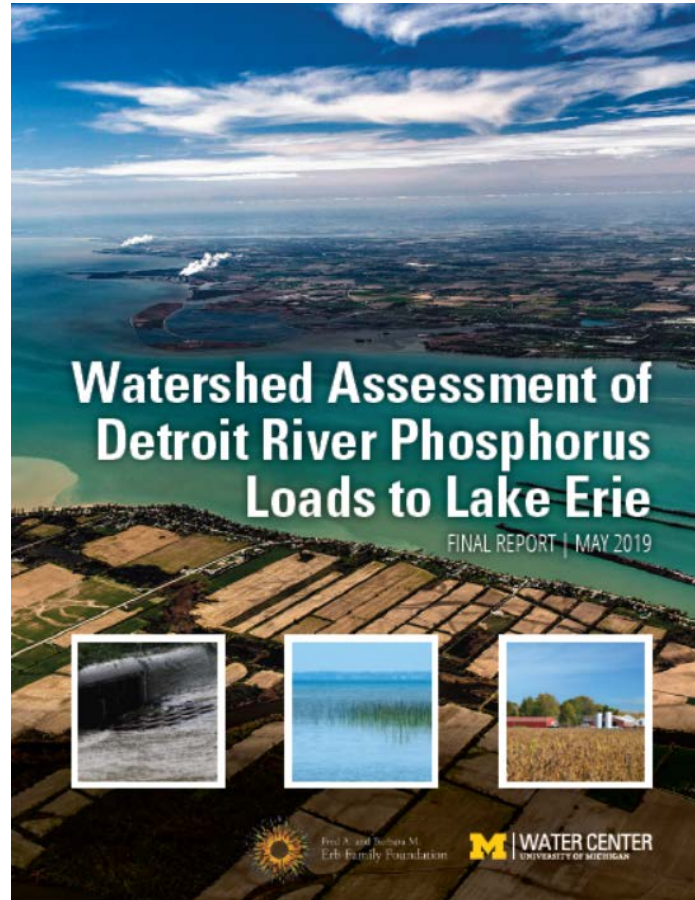
Fred A. and Barbara M.
Erb Family Foundation



WATER CENTER
UNIVERSITY OF MICHIGAN

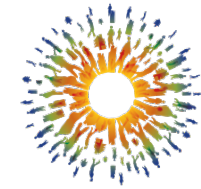


Project overview



TEAM: Don Scavia, Jen Read , Awoke Dagnew, Becca Muenich, Branko Kerkez, Yao Hu, Serghei Bocaniov, Colleen Long, Yu-Chen Wang, Lynn Vaccaro,

FUNDING: Erb Family Foundation



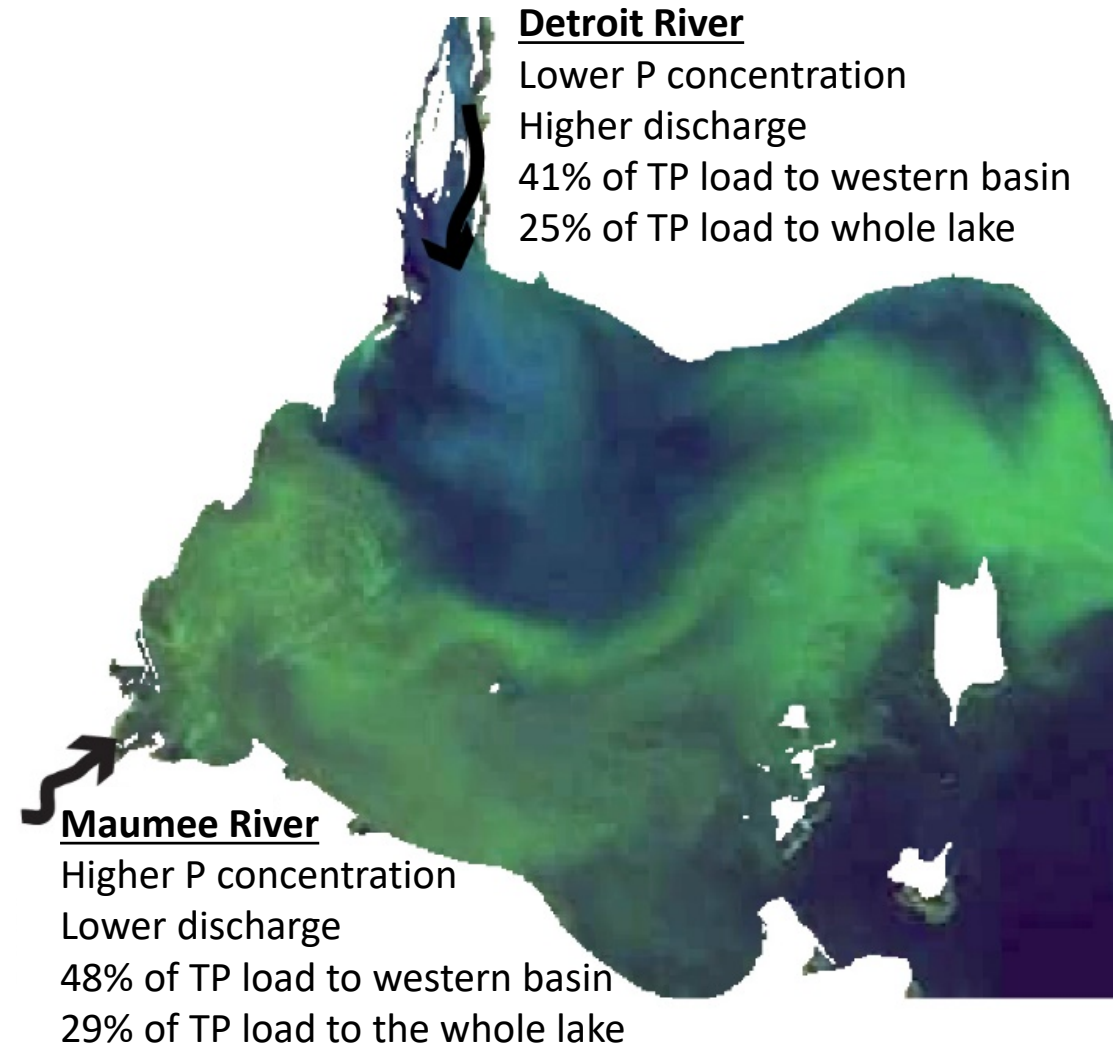
Fred A. and Barbara M.
Erb Family Foundation

ADVISORY GROUP: 30 people from US and Canadian government, non-profit, industry, and academic sectors provided feedback throughout entire project

Report (released May 2019) and supporting documents available at: myumi.ch/detroit-river

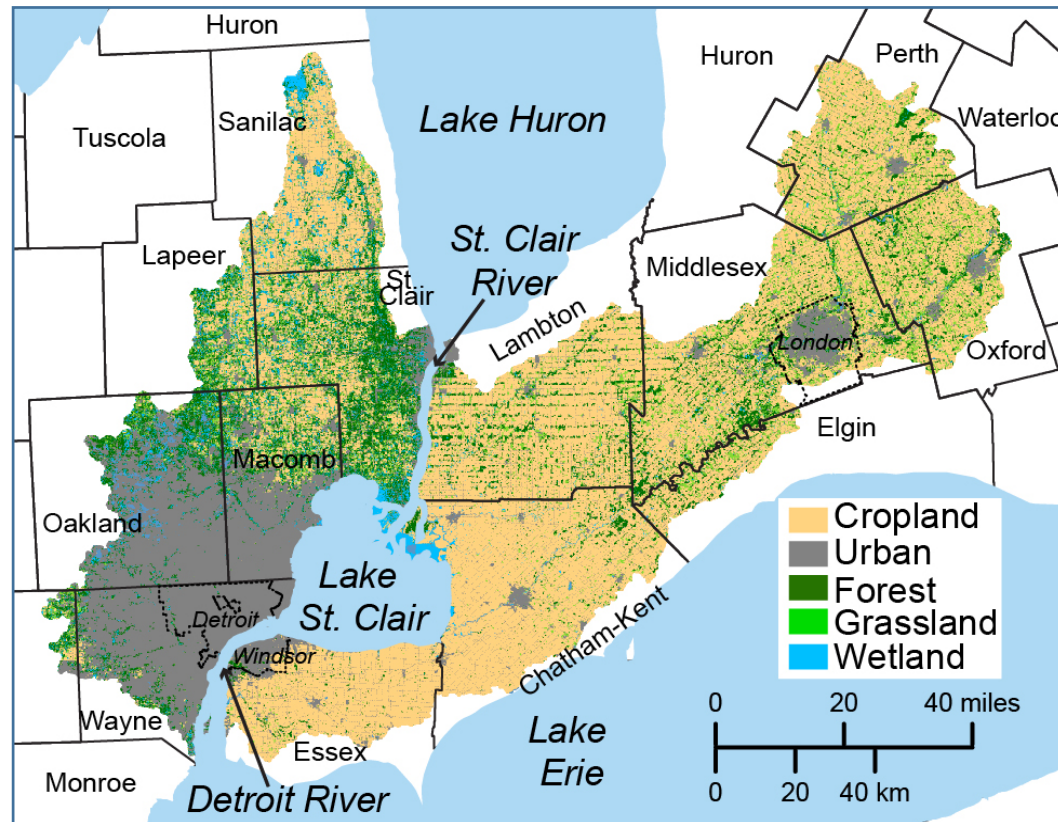
Why this study was needed

- Lake Erie Harmful Algal Blooms (HABs) and hypoxia (low oxygen) are driven by phosphorus inputs.
- US and Canada signed a revised *Great Lakes Water Quality Agreement* in 2012 that led to new loading targets and action plans to reach them.
- Targets include a 40% reduction (relative to 2008 levels) in western and central basin TP loads.
- **There has been uncertainty about the role of the Detroit River, sources of Detroit River nutrients, and managing Detroit river loads.**



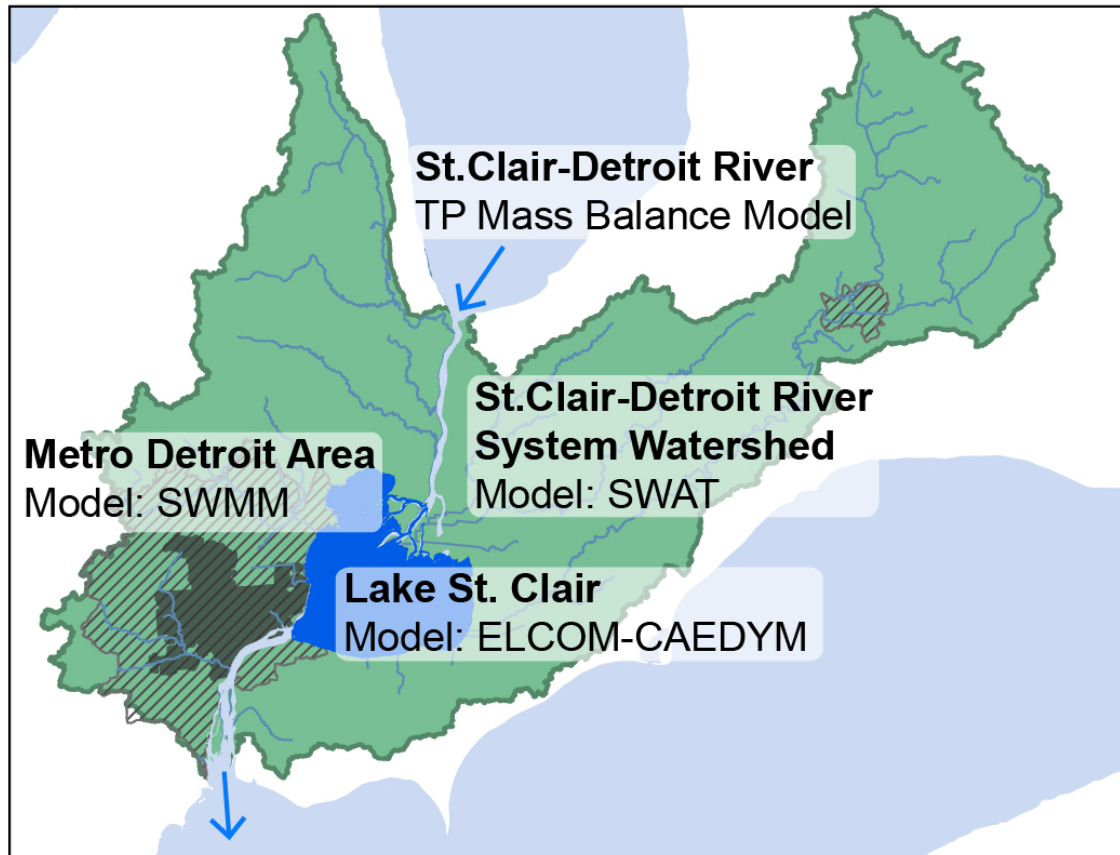
TP= Total Phosphorus, which includes dissolved and particulate forms of P

Study area: the St. Clair-Detroit River System



- 19,040 km² watershed
- ~40% in Michigan and ~60% in Ontario
- 49% cropland, 21% urban, 13% forest, 7% grassland, 7% water bodies
- 79% of the agricultural land is in Ontario
- 83% of the urban land is in Michigan
- Lake St. Clair processes water and nutrients from Lake Huron (via the St. Clair River) and its proximate 15,000 km² watershed

Study approach

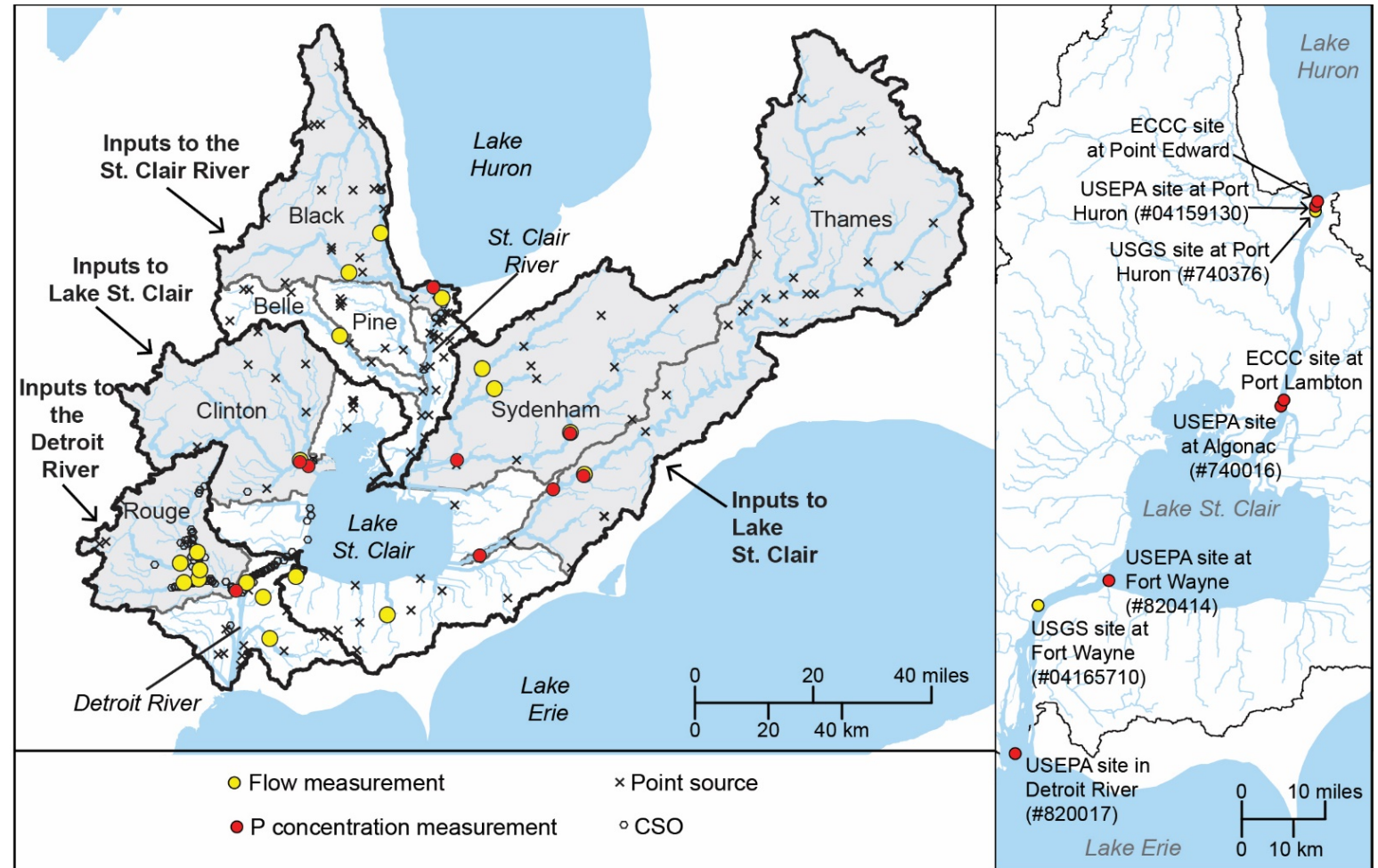


Four models were used to estimate loads and assess opportunities for load reduction

1. A total phosphorus **mass balance model** for all inputs and outputs
2. A **watershed** model simulating flow and dynamics of water, nutrients, and sediments
3. A 3D coupled hydrodynamic and ecological model of **Lake St. Clair**
4. An urban model simulating the sewer service area in the **metro Detroit area**

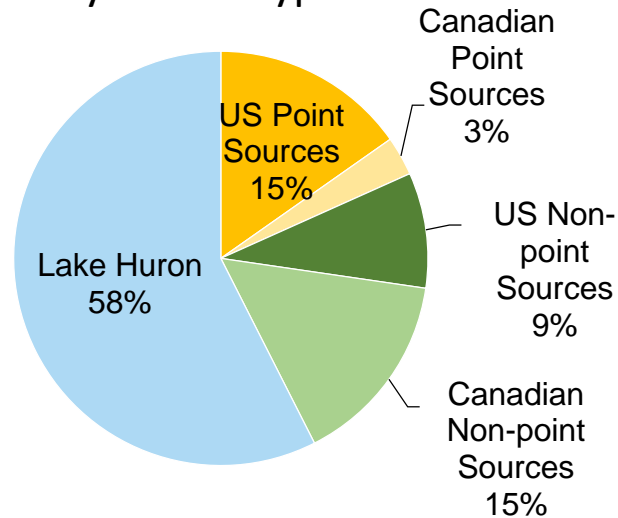
Estimating total phosphorus contributions

1. **Non-point source loads** calculated using flow and phosphorus measurements from gauge stations for each sub-watershed, direct drainage area, and Lake Huron.
2. **Point source loads** (including CSOs) calculated from EPA and MOECC data bases.

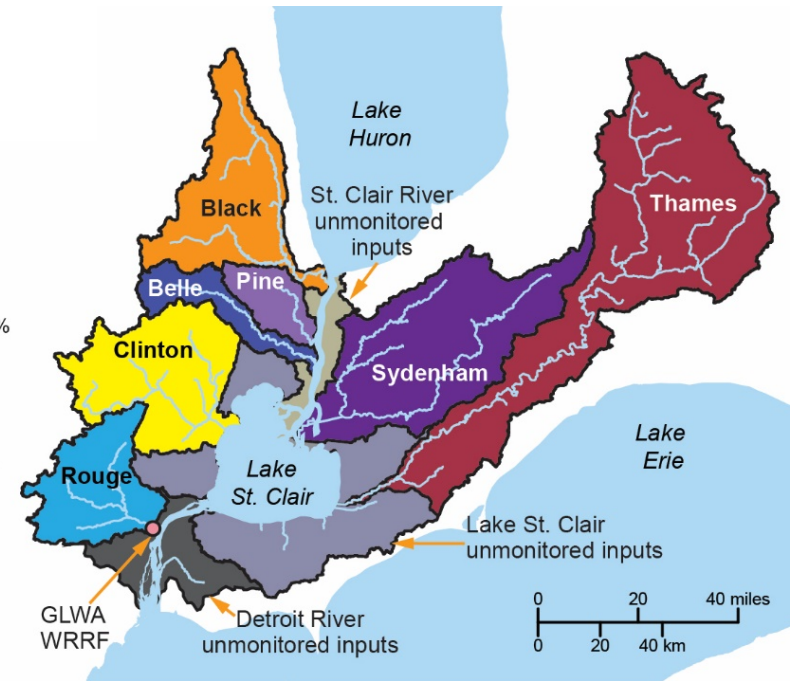
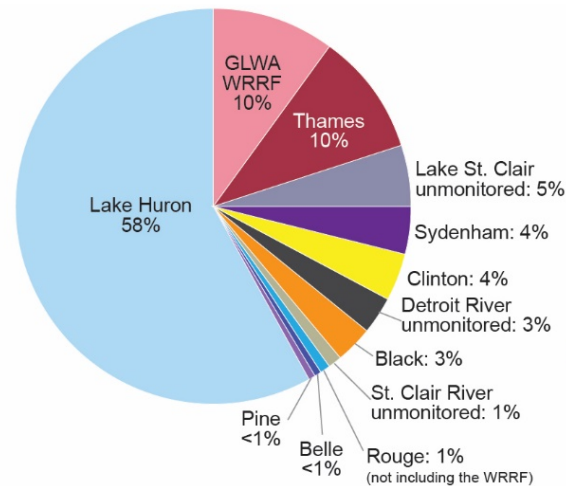


Where is phosphorus coming from?

TP contributions from primary source types



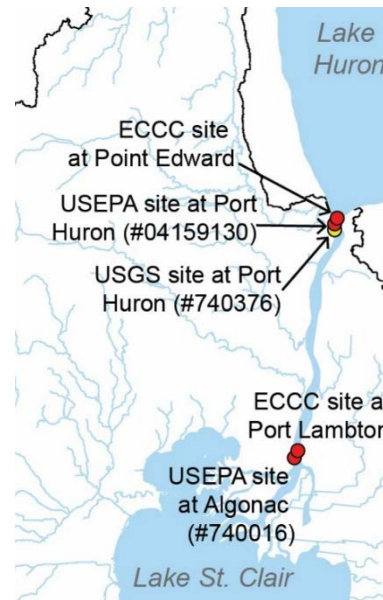
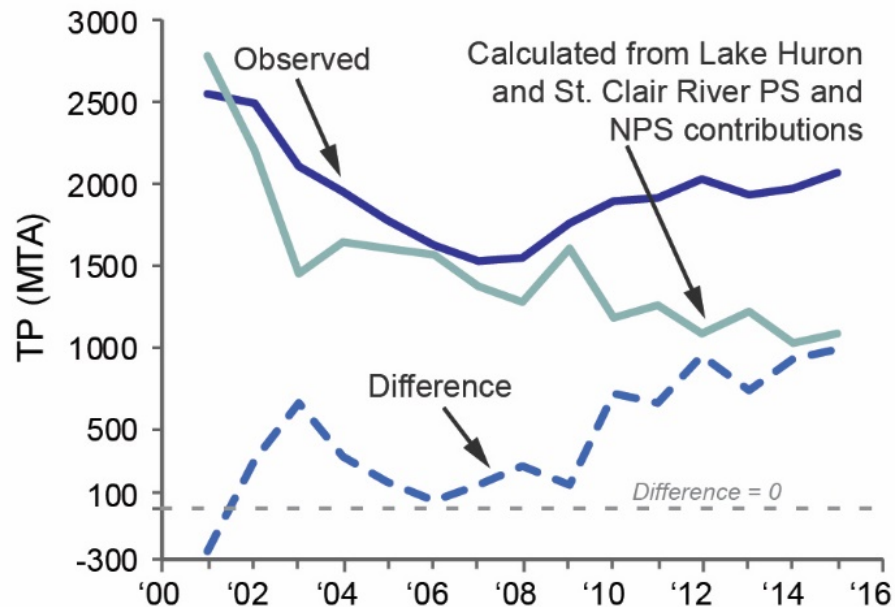
TP contributions from sub-watersheds



- Lake Huron contributes about half of all P coming from this watershed.
- Point source and non-point source contributions are nearly equal.
- The Great Lakes Water Authority Water Resource Recovery Facility (GLWA WRRF) in Detroit contributes more than any individual sub-watershed and more than all other point sources combined.

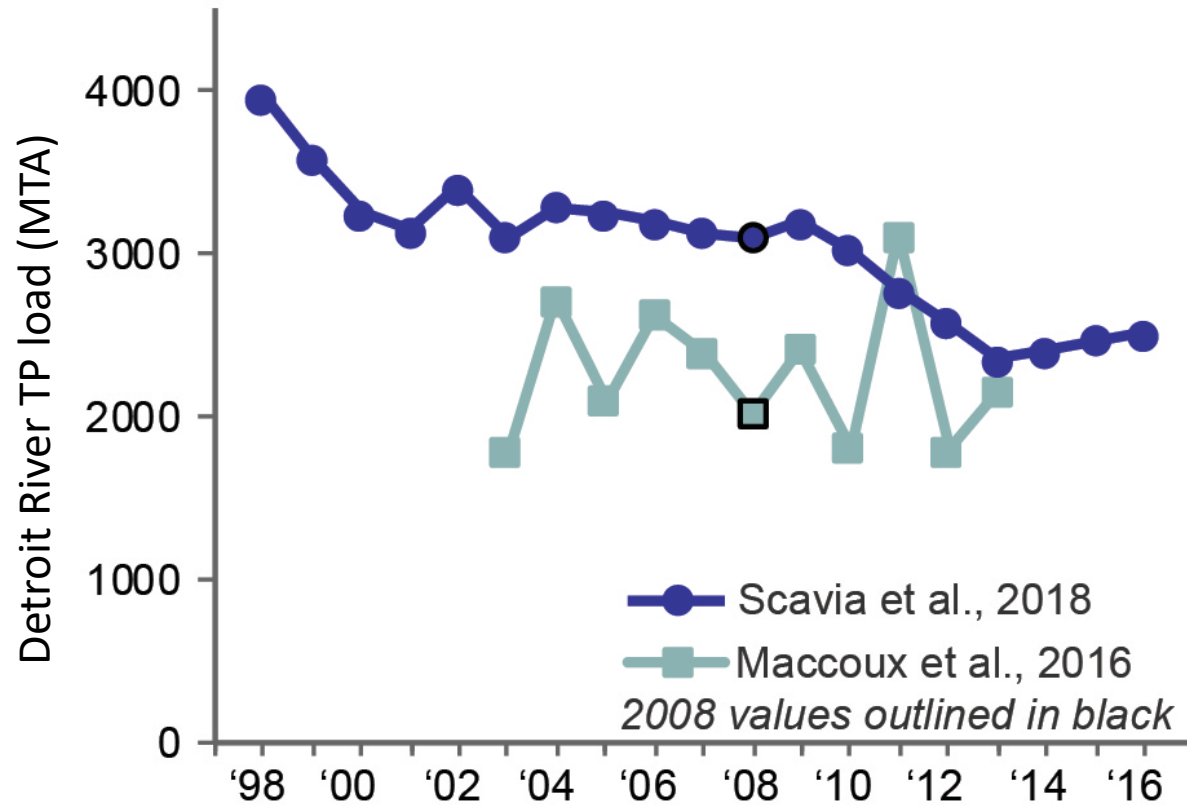
Note: This is based on average loads for a 4-year period from 2013 – 2016 and does not take into account any processing of nutrients in Lake St Clair

Phosphorus from Lake Huron



- TP inputs to Lake St. Clair measured at Algonac and Port Lambton (black line) are **greater than** the measured TP out of Lake Huron plus St. Clair River PS and NPS contributions (gray line).
- This unmeasured load is likely from large sediment resuspension events in Lake Huron that evade detection at Point Edward and Point Huron monitoring sites.
- This unmeasured load was also identified by Burniston et al. (2018).
- The unmeasured load has increased over time, consistent with decreased ice cover and increased storms in Lake Huron.

Detroit River TP loads to Lake Erie

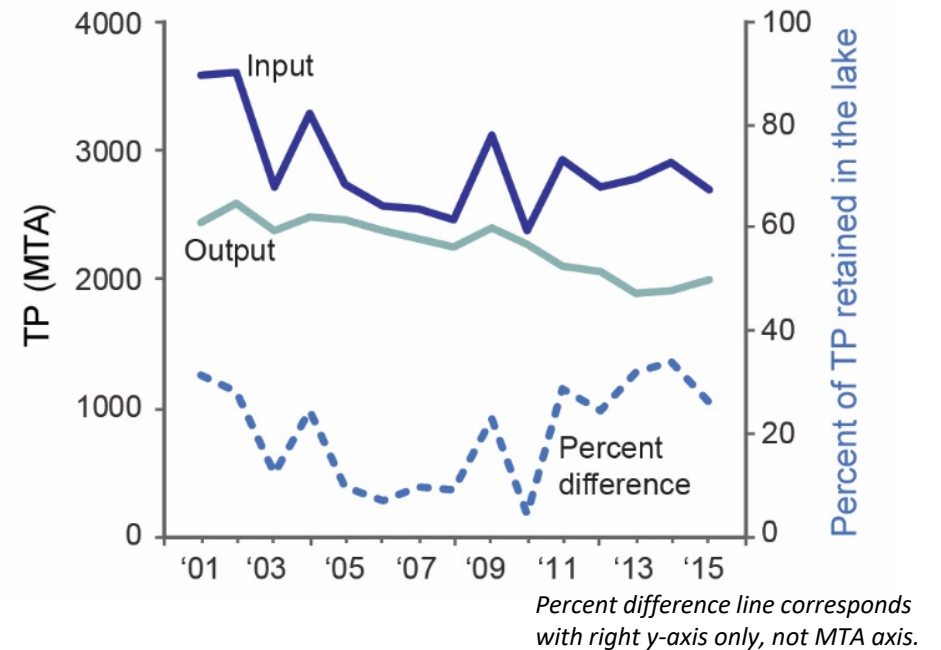


- Our estimate for 2008 is considerably higher than what was used to set the targets (Maccoux et al. 2016).
- Maccoux et al. underestimates likely due to their of a low value for the Lake Huron load.

Lake St. Clair is a TP sink

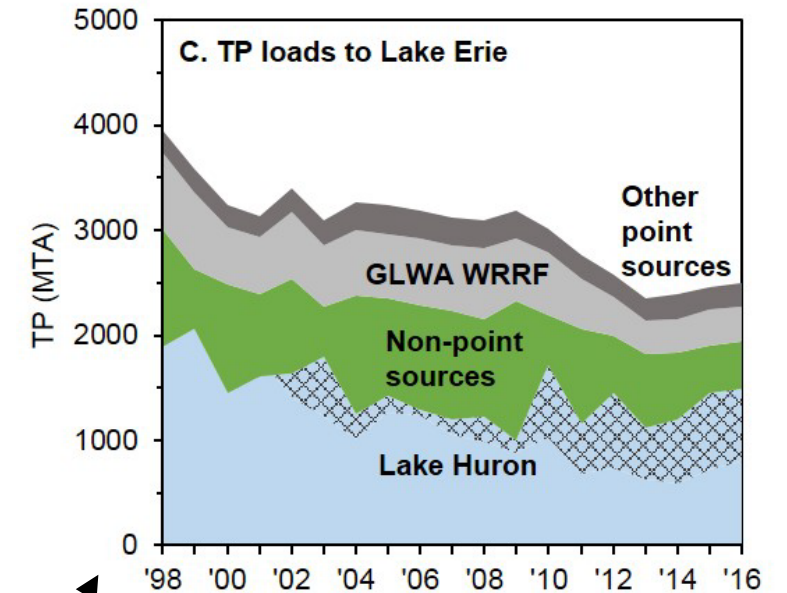
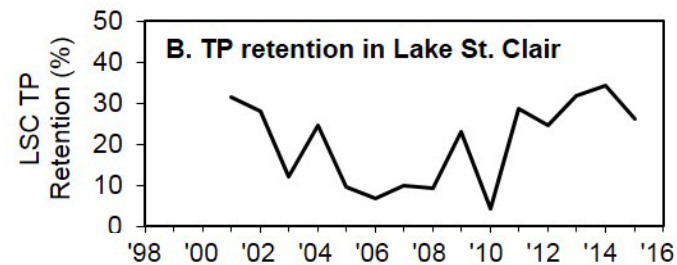
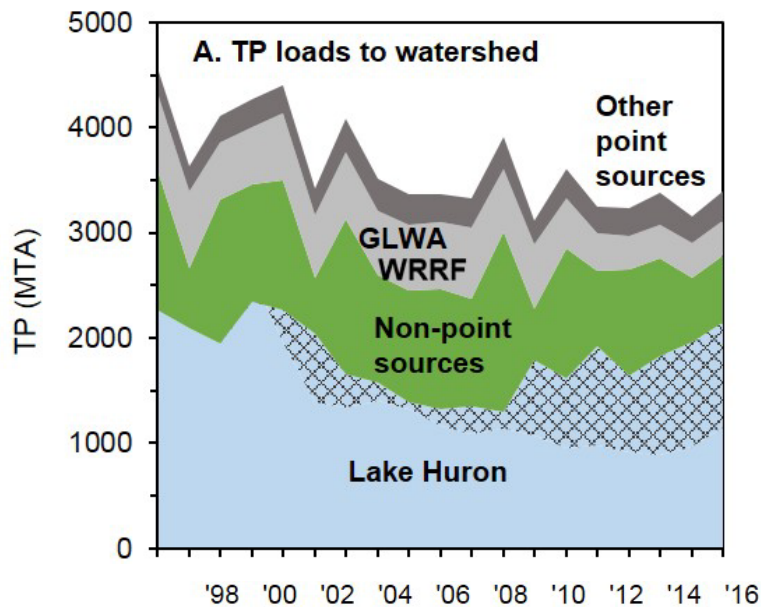
- On average between 2001 and 2015, Lake St. Clair retained 20% of its TP inputs (with substantial inter-annual variability).
- Sediment deposition in the 30% of lake deeper than 5m likely contributes to the retention.
- Zebra and quagga mussels also likely contribute.
- DRP measurements are less reliable, but annual retention appears to be much lower, possibly approaching 0.

TP input to and output from Lake St. Clair annually



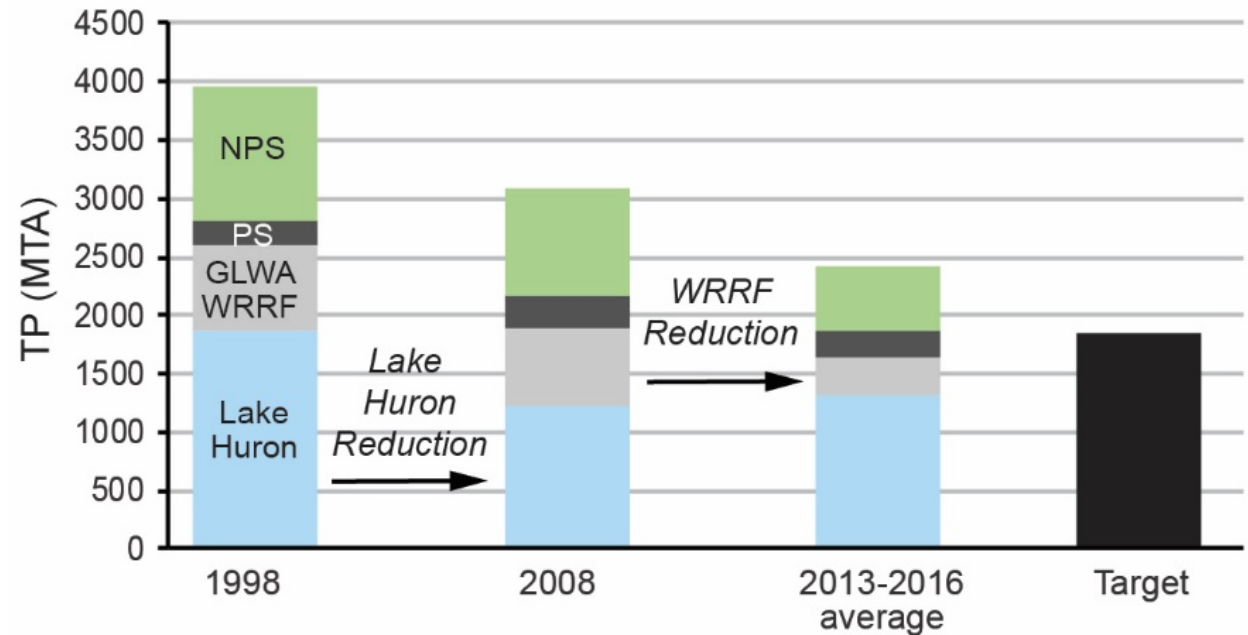
The role of Lake St Clair

- Some of the TP from sources upstream of Lake St. Clair will be retained and not reach the Detroit River or Lake Erie.
- This tends to increase the relative importance of sources below Lake St. Clair.



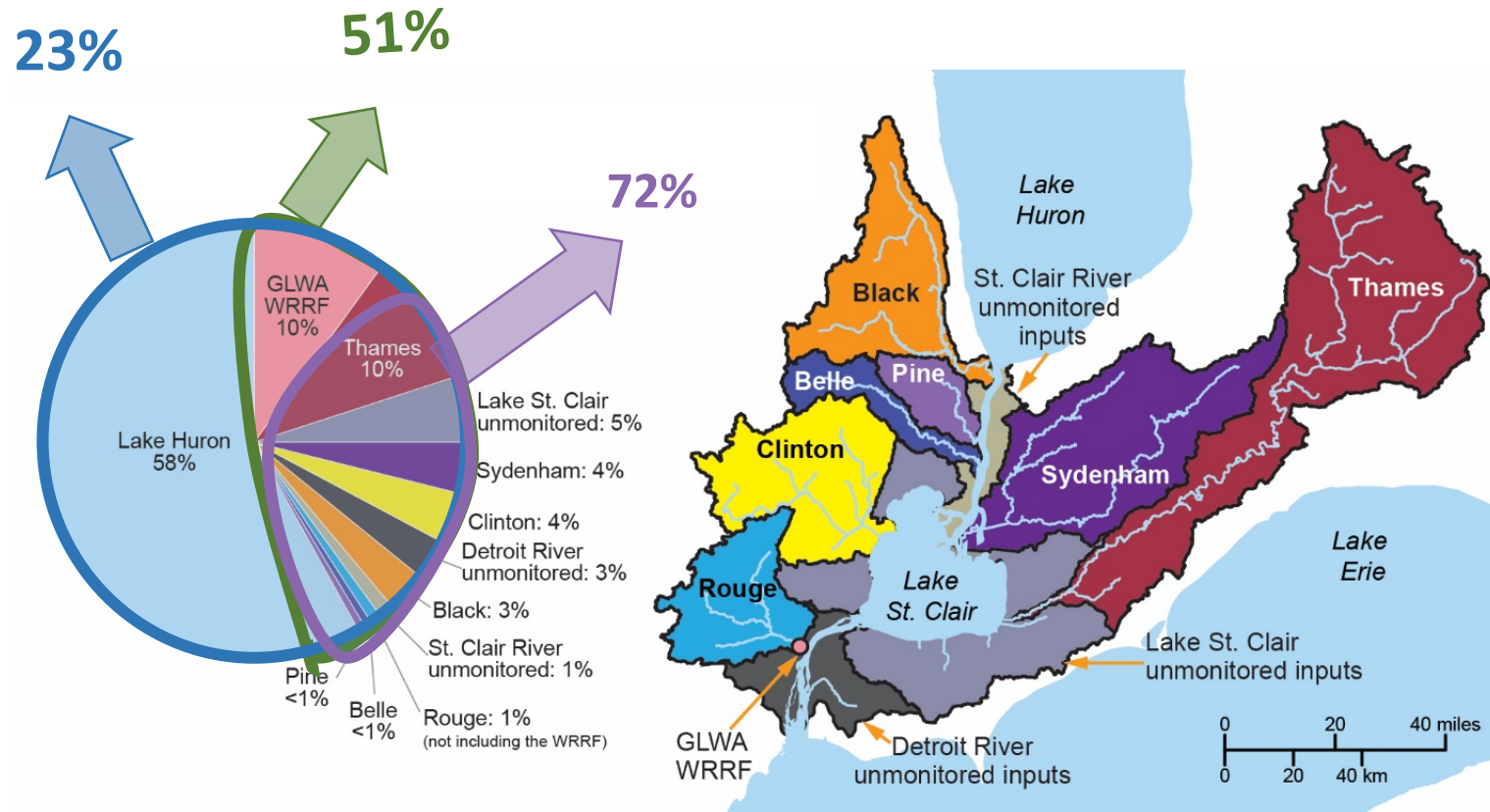
How have inputs changed over time?

- 2008 Detroit River TP load estimate: **3,096 MTA**
- 40% reduction means target for the Detroit River is **1,858 MTA**.
- Detroit River load has already declined to **2,425 MTA** (2013-2016 average load), mostly due to decreases in the loads from Lake Huron and the WRRF.
- **567 MTA** remain to be reduced.



Note: These numbers are based on the load estimates generated by the project team and have not been adopted for official use.

Percent reduction needed to hit 40% target

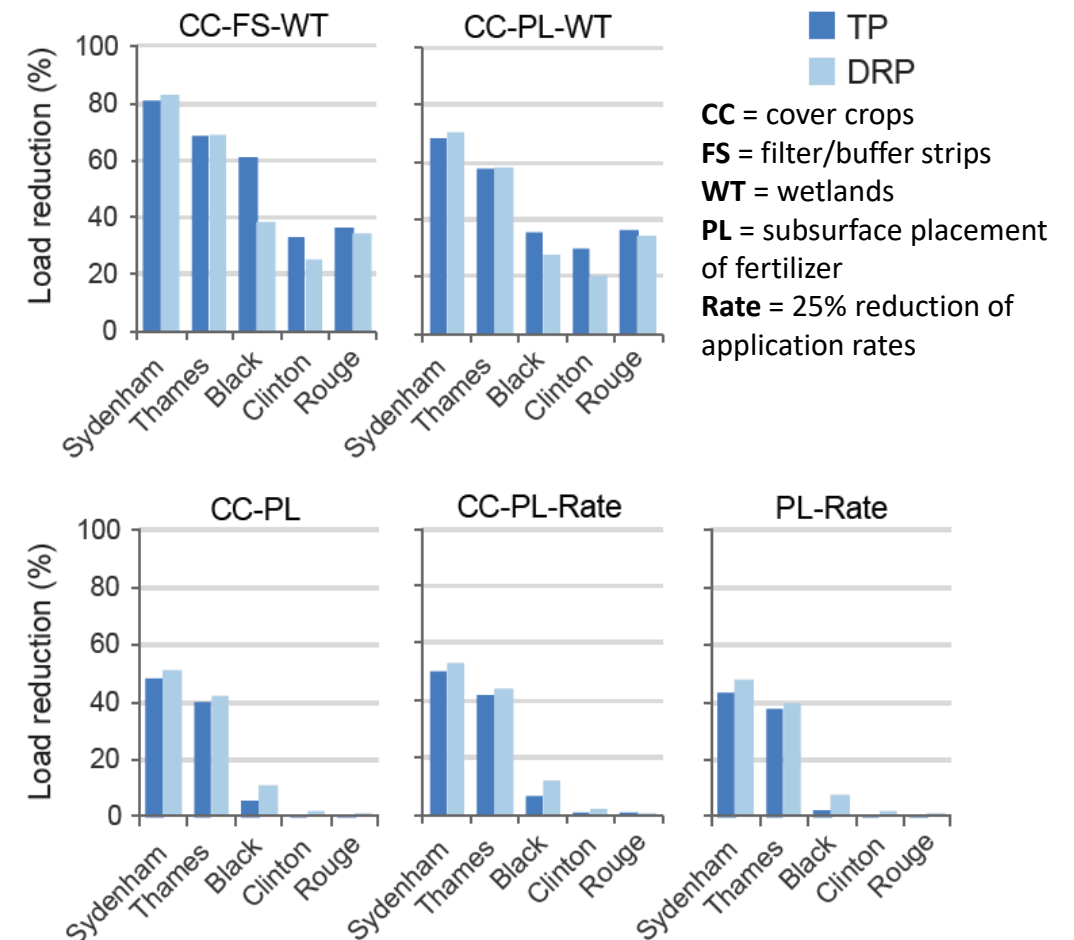


- An additional **23%** reduction from all sources is needed to meet the loading target.
- If there are no reductions to the Lake Huron load, a **51%** reduction would be required from the remaining watershed sources.
- If there are no further reductions from the GLWA WRRF **and** none from Lake Huron, a **72%** load reduction would be needed from the remaining sources.
- Reducing Lake Huron load and GLWA WRRF loads each by 10-15% leaves 40-50% to be reduced from other watershed sources (which simulations show is possible).

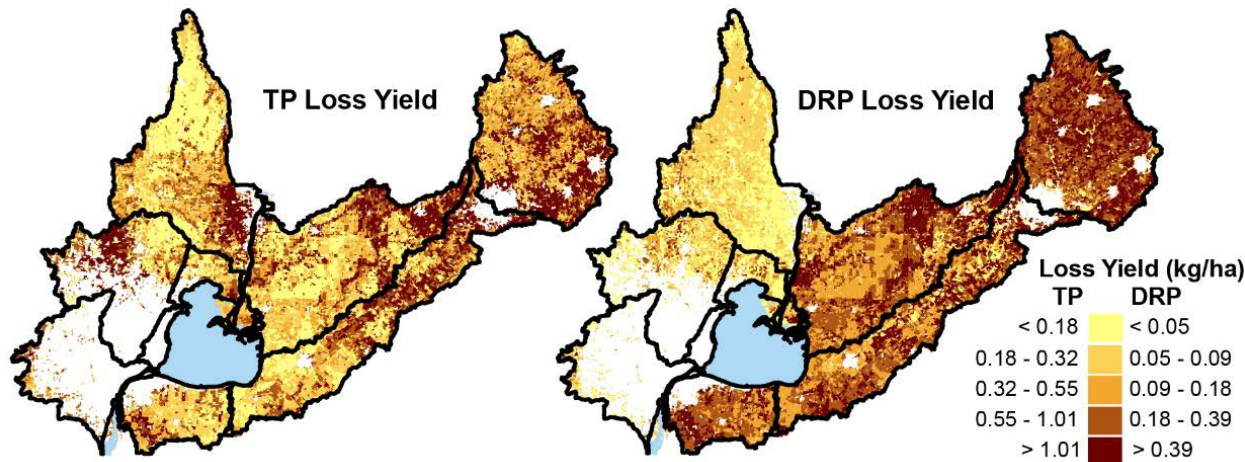
Options for reducing nonpoint sources

- Even with 100% adoption, none of the practices implemented alone achieved a 40% load reduction at their subwatershed's outlet.
- Bundling practices works better than implementing single practices.
- Combining practices such as cover crops, filter strips, wetlands, and subsurface placement of fertilizer resulted in TP reductions >50%.
- CC-PL bundle performed almost as well as CC-PL-Rate, suggesting it may not be necessary to adjust application rate if cover crops and subsurface placement are implemented.

Modeling results for scenarios with a combination of practices applied on all crop lands



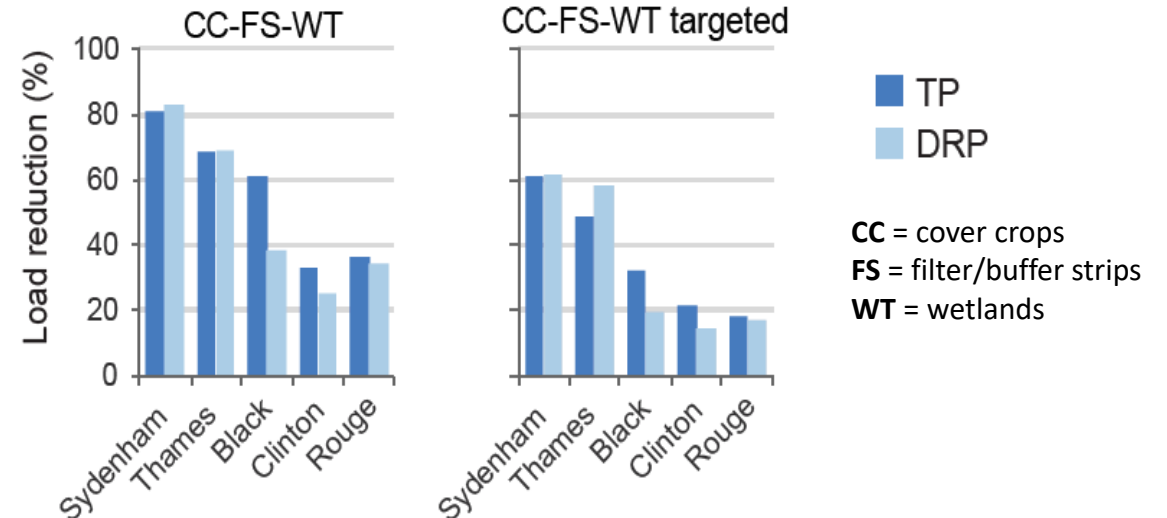
Options for reducing nonpoint sources



Focusing practices on land with the highest phosphorus losses (55% of total land, instead of 100%) resulted in reductions approaching those achieved by applying practices on all agricultural land.

While Ontario fertilizer application is higher and tile drain spacing is more intense ...

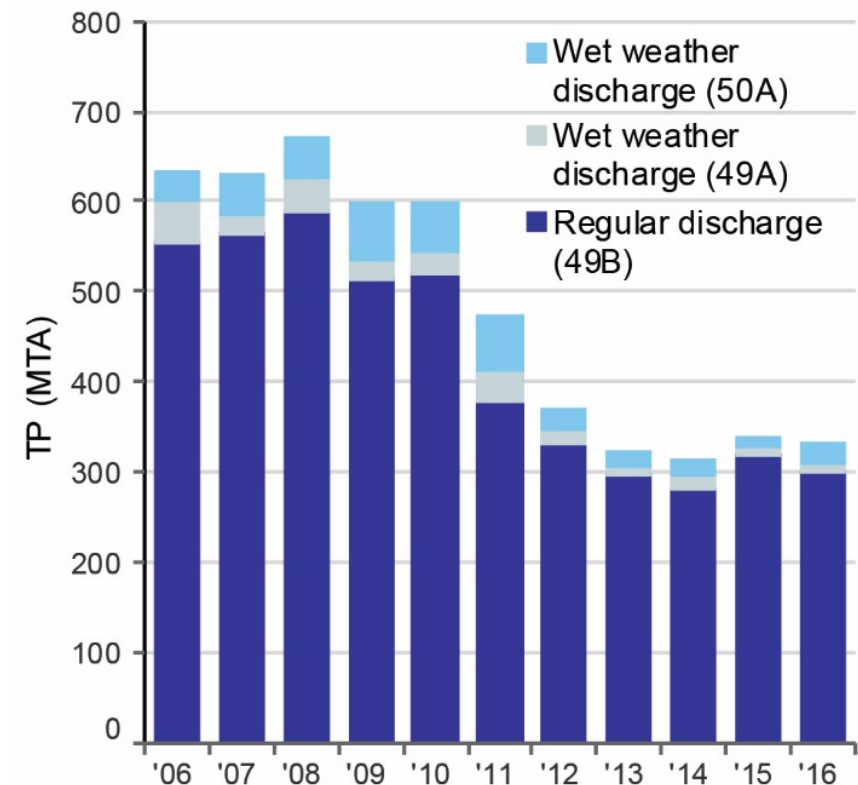
... it is more likely that higher rainfall and different soil characteristics explain the higher loss yields compared to Michigan.



Options for reducing point sources

- Point sources contribute 43% of the TP watershed load, and CSOs contribute less than 4%.
- GLWA WRRF is 54% of the point source TP load and 13% of the Detroit River's load to Lake Erie.
- GLWA WRRF has already reduced its load by 51% since 2008.
- While reductions from any one of the ~150 other point sources will not have a substantial impact, collectively they could help.

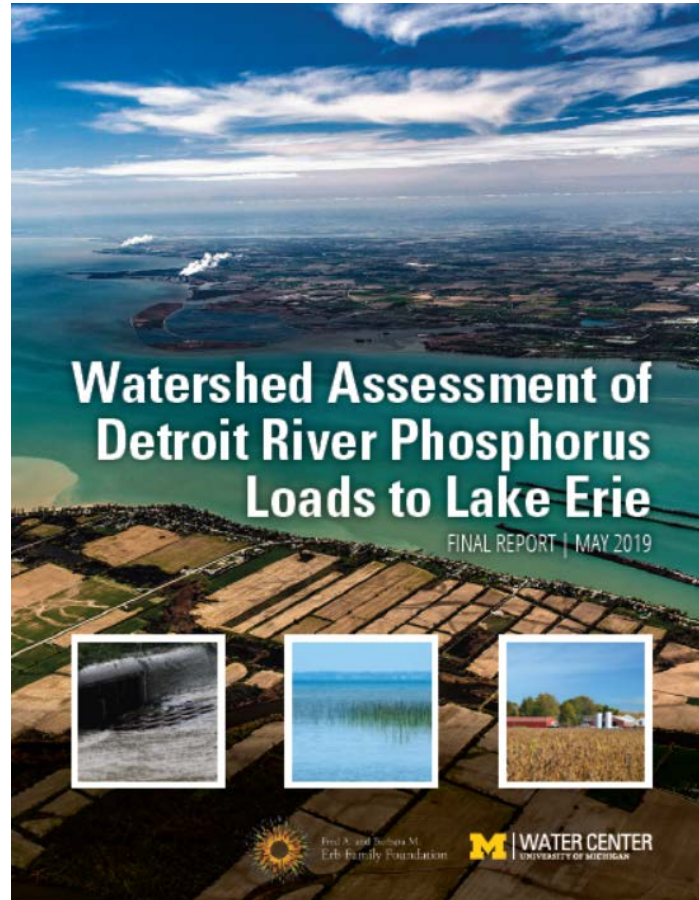
Changes in the phosphorus load from the Great Lakes Water Authority Water Resource Recovery Facility (GLWA WRRF) in Detroit



Summary of key findings

- Over 50% of the Detroit River TP load comes from **Lake Huron**.
- On average, **Lake St. Clair** retains 20% of the TP that enters the lake.
- Model simulations suggest **bundles of agricultural practices** could be used to exceed load reduction targets from individual sub-watersheds, but applying single practices alone did not.
- **Targeting agricultural practices** on just the 55% of land with the highest loss yields is nearly as effective as putting practices on 100% of land in some cases.
- The **WRRF in Detroit** contributes 23% of the watershed load (not including Lake Huron's contributions) and 13% of the Detroit River's load to Lake Erie, but it has already reduced its load by 51% since 2008.
- Reaching a 40% load reduction for the Detroit River requires reducing
 - **23%** of all sources (because some reduction has already occurred since 2008)
 - **51%** of watershed sources if Lake Huron is not included
 - **72%** of sources if Lake Huron and the WRRF are not included

Thank you!



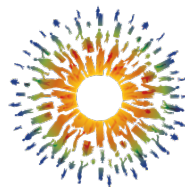
Web page: www.myumi.ch/detroit-river

Contacts:

Project lead: **Jennifer Read**, jenread@umich.edu

Lead scientist: **Don Scavia**, scavia@umich.edu

Stakeholder engagement: **Lynn Vaccaro**, lvaccaro@umich.edu



Fred A. and Barbara M.
Erb Family Foundation



WATER CENTER
UNIVERSITY OF MICHIGAN