

# We the People of Detroit Community Research Collective

## Links:

[wethepeopleofdetroit.com/communityresearch](http://wethepeopleofdetroit.com/communityresearch)

Facebook: We the People of Detroit

Detroit Minds Dying: [detroitmindsdying.org](http://detroitmindsdying.org)

We the People of Detroit

Emily Kutil

Andrew Herscher

[wethepeopleofdetroit@gmail.com](mailto:wethepeopleofdetroit@gmail.com)

[emily.kutil@gmail.com](mailto:emily.kutil@gmail.com)

[herscher@umich.edu](mailto:herscher@umich.edu)





**We the People of Detroit Founders (left to right):**

Debra Taylor, Cecily McClellan, Chris Griffith, Aurora Harris, Monica Lewis-Patrick



# We the People of Detroit Community Research Collective

---

Aurora Harris	Co-Founder/Secretary of We the People of Detroit
Monica Lewis-Patrick	Co-Founder, President and CEO of We the People of Detroit
Debra Taylor	Co-Founder/Director of Finance and Development of We the People of Detroit
Julia Cuneo	Youth Organizer, We the People of Detroit
Nadia Gaber	MSTP MD/Ph.D. Student, University of California Berkley
Andrew Herscher, Ph.D.	Associate Professor of Architecture, University of Michigan
Gloria House, Ph.D.	Professor Emeritus, University of Michigan Dearborn and Wayne State University
Emily Kutil	Instructor, University of Detroit Mercy School of Architecture
Kate Levy	Artist and Filmmaker, <a href="http://detroitmindsdying.org">detroitmindsdying.org</a>
Thomas Pedroni, Ph.D.	Associate Professor of Curriculum Studies and Policy Sociology, Wayne State University, Director of Detroit Data and Democracy Project
Kaitlin Popielarz	Ph.D. Student, K-12 Curriculum and Instruction, Wayne State University
Rev. Bill Wylie-Kellermann	Pastor, St. Peter's Episcopal Church, retired











## Areas of research

---



**Water**



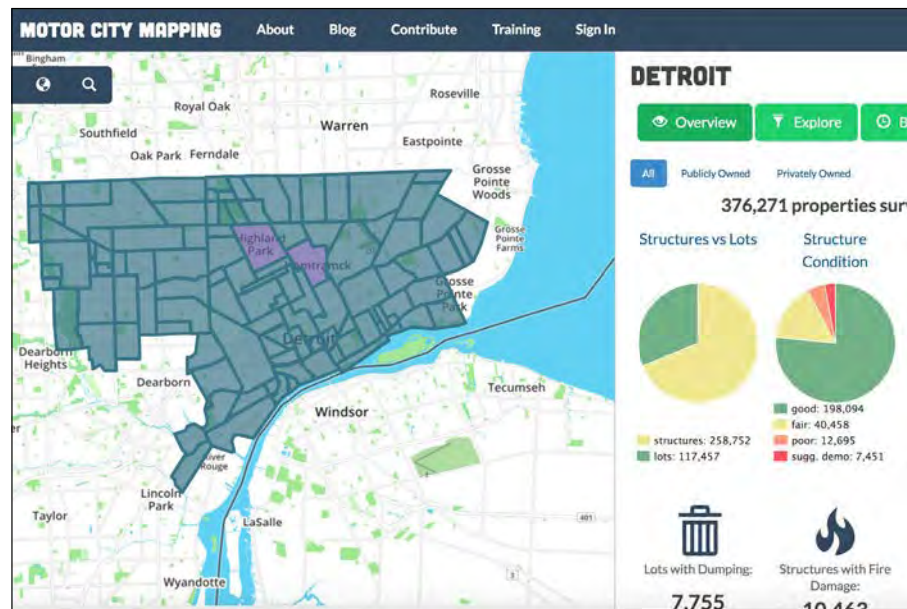
**Education**



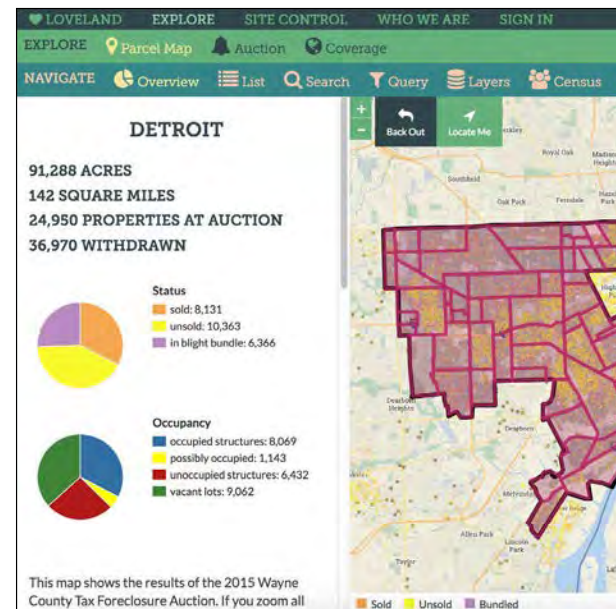
**Land**

Images: We the People of Detroit, Detroit Independent Freedom Schools Movement, Detroit People's Platform

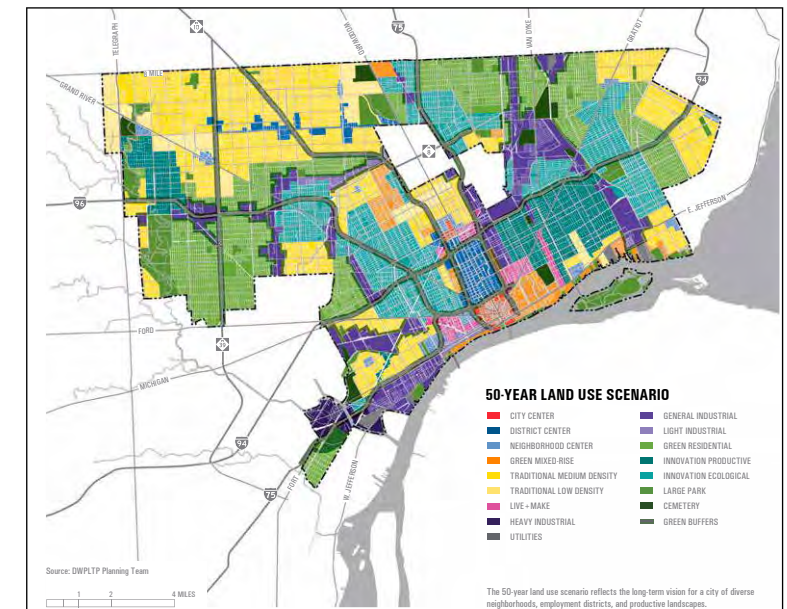
# The context of data and mapping in Detroit



Motor City Mapping



Loveland



Detroit Future City

## Our Process and Working Values

---

**Community Control of Data**



**Consensus and Collaboration**



## How do we use our work?

---



# Graphic Narrative Techniques:

---

## 1. Make an image with existing data that answers a specific question

ex: Where is water being shut off in Detroit?

ex: Are African-American communities disproportionately taken over by Emergency Managers in Michigan?

ex: How many students are being displaced by school closings in Detroit?

## 2. Create a new research document by compiling data to tell a story

ex: Compile regional water rate information to compare water bills in Detroit and suburban communities.

ex: Compile education data to create a picture of the education landscape over time in Detroit.

## 3. Make a diagram that explains a complex situation clearly

ex: Explain how water bills are structured in Detroit and its suburbs.

ex: Show corporate and foundation influence on Detroit Public Schools.

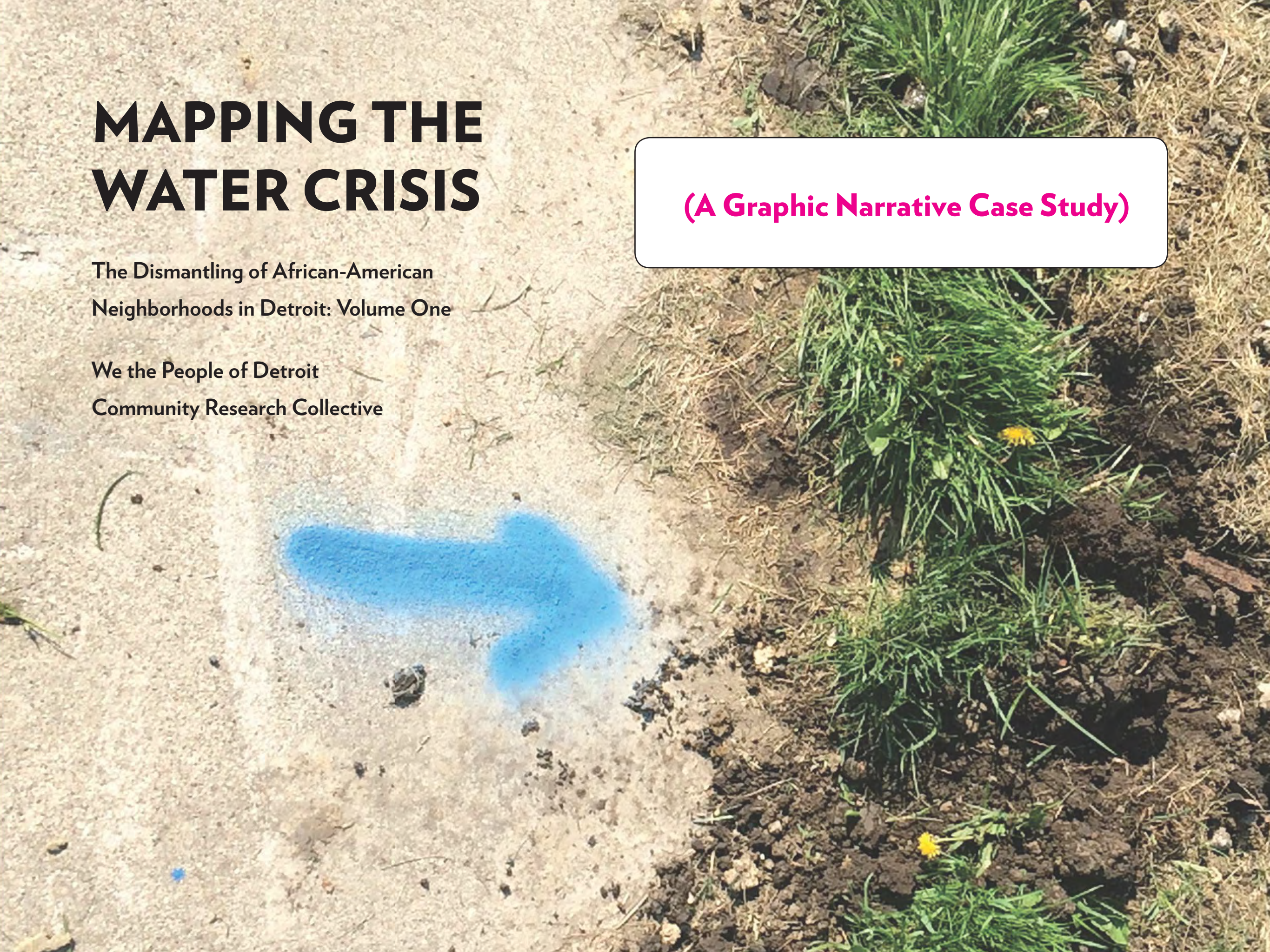


# MAPPING THE WATER CRISIS

The Dismantling of African-American  
Neighborhoods in Detroit: Volume One

We the People of Detroit  
Community Research Collective

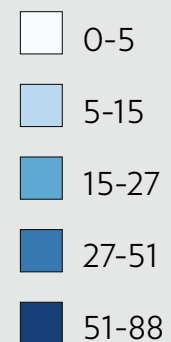
(A Graphic Narrative Case Study)





**1. Make an image with existing data  
that answers a specific question**

**Residential Water Shutoffs in Detroit  
based on compiled DWSD FOIA data,  
January 2015—February 2016  
(by Census Block Group)\***



**Water Shutoffs Displace Families  
and Destabilize Neighborhoods**



**1. Make an image with existing data  
that answers a specific question**

**City of Flint**

Emergency Manager 2/2002—6/2004, 12/2011—4/2015

**City of Pontiac**

Emergency Manager 8/2010—8/2013

**Pontiac City School District**

Consent Agreement 8/2013—Present

**Royal Oak Township**

Consent Agreement 4/2014—Present

**City of Highland Park**

Emergency Manager 12/2000—7/2009

Currently under evaluation

**Highland Park School District**

Emergency Manager 1/2012—Present

**City of Hamtramck**

Consent Agreement 4/2012—8/2012

Emergency Manager 3/2013—12/2014

**City of Detroit**

Consent Agreement 4/2012—8/2012

Emergency Manager 3/2013—12/2014

**Detroit Public Schools**

Emergency Manager 3/2009—Present

**Wayne County**

Consent Agreement 8/2015—Present

**City of Inkster**

Consent Agreement 2/2012—Present

**City of Allen Park**

Emergency Manager 10/2012—9/2014

**City of Lincoln Park**

Emergency Manager 7/2014—12/2015

**City of River Rouge**

Consent Agreement 12/2009—Present

**City of Ecorse**

Emergency Manager 10/2009—4/2013

**Muskegon Heights  
School District**

Emergency Manager 4/2012—Present

**City of Benton Harbor**

Emergency Manager 4/2010—3/2014

**Benton Harbor  
Area Schools**

Consent Agreement 9/2014—Present

● 25 African-American People

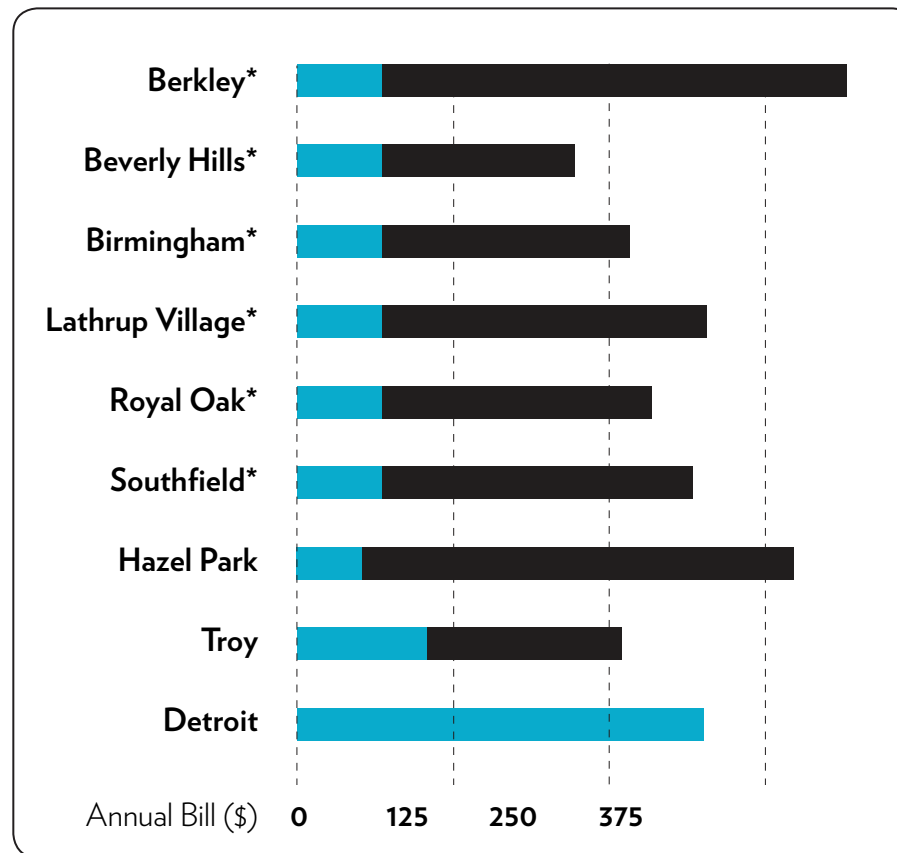
● 25 White People

● 25 People of Other Races

□ Municipalities under past or current Emergency Management  
or Consent Agreement

# Race and Municipal Emergency Management in Southeast Michigan

## 2. Create a new research document by compiling data to tell a story



### Wholesale Rates vs. Retail Markups

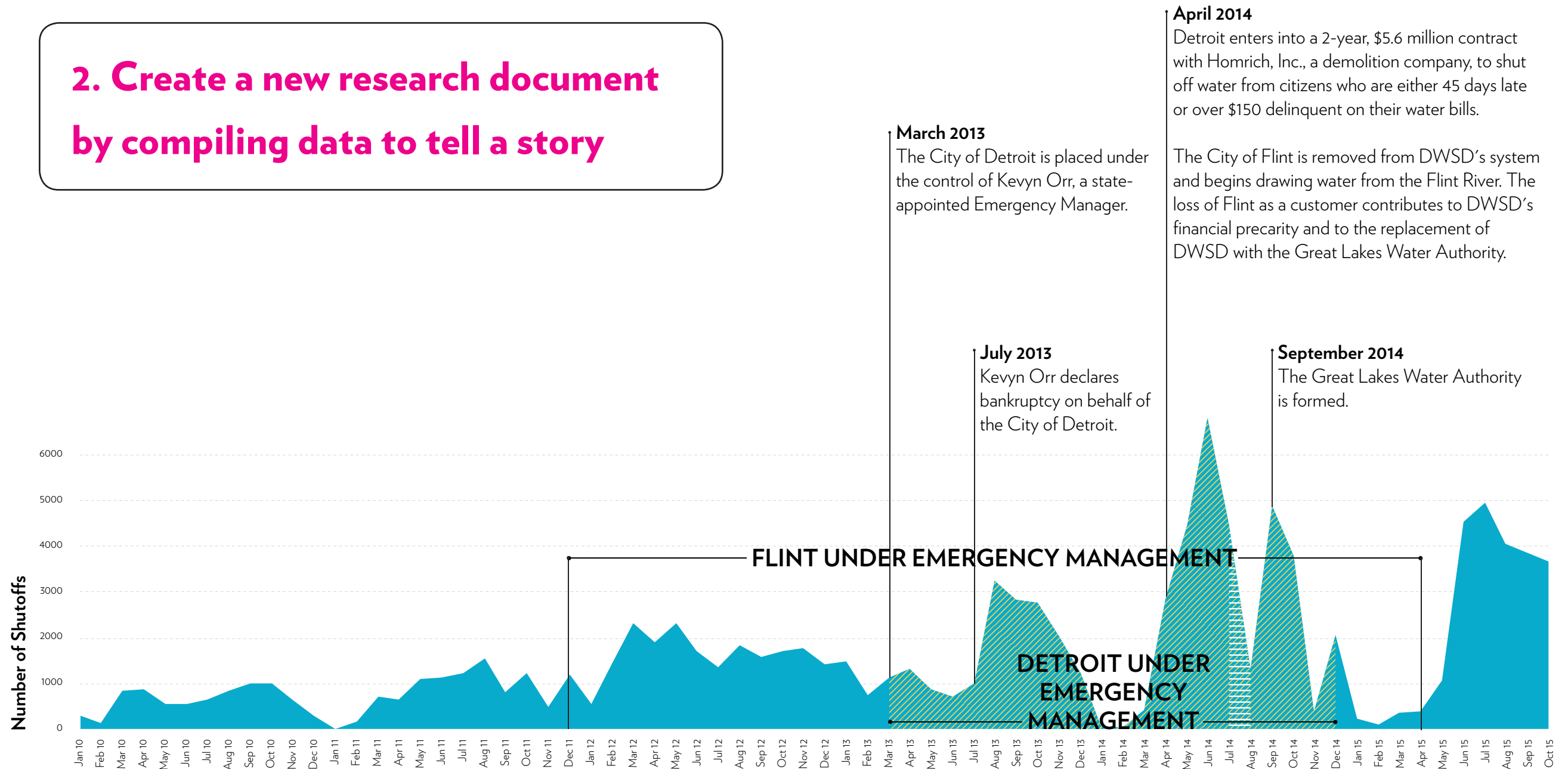
Annual water service bill of a residential customer using 8,400 cubic-feet of water per year with a standard 5/8" meter. Does not include wastewater.

\*Member of South Oakland County Water Authority

- Money retained by DWSD
- Money retained by suburban municipality



## 2. Create a new research document by compiling data to tell a story



# Water Shutoffs, Emergency Managment, the Removal of Flint from DWSD System, and the Great Lakes Water Authority

### Data Sources

Water Shutoffs: Detroit Water and Sewerage Department.

Community Resistance Timeline: Bill Wylie Kellermann, "Water Struggle Timeline," On the Edge, Autumn/Winter 2015.



**3. Make a diagram that explains a complex situation clearly**

DWSD Wholesale Suburban Water Rates



## Our data visualization tools:

---

### Data Collection, Storage and Compilation

- Excel spreadsheets
- Numbers (mac version of Excel)
- Google Drive

### Mapping

- QGIS (Open-source GIS software available at [qgis.org](http://qgis.org))

### Graphics

- Adobe Illustrator

# Where do you get your data?

---

## 1. Your Own Community

“Big data” can be useful, but often the information you need is already within your community. Consulting experts within your network and doing community surveys are some of the most powerful ways to visualize information that will be useful to your community.

## 2. Open Data Portals

Most city, state and national governments have open data portals where they share data, geographic and otherwise.

## 3. Census Data

Download census data at [nhgis.org](http://nhgis.org) (NHGIS = National Historical Geographic Information System)

## 4. Freedom of Information Act (FOIA) Requests

Public bodies (city, state, and national government organizations) must honor FOIA requests. If the data you need is held by one of these organizations, you can submit a FOIA request.