

Getting to Know Integrated Assessment



What is Integrated Assessment?

An Assessment...

Or a review and analysis of research and data related to a specific issue.

That Integrates...

- Policy or management context
- Stakeholder perspectives
- Several disciplines
- An analysis of causes and possible solutions

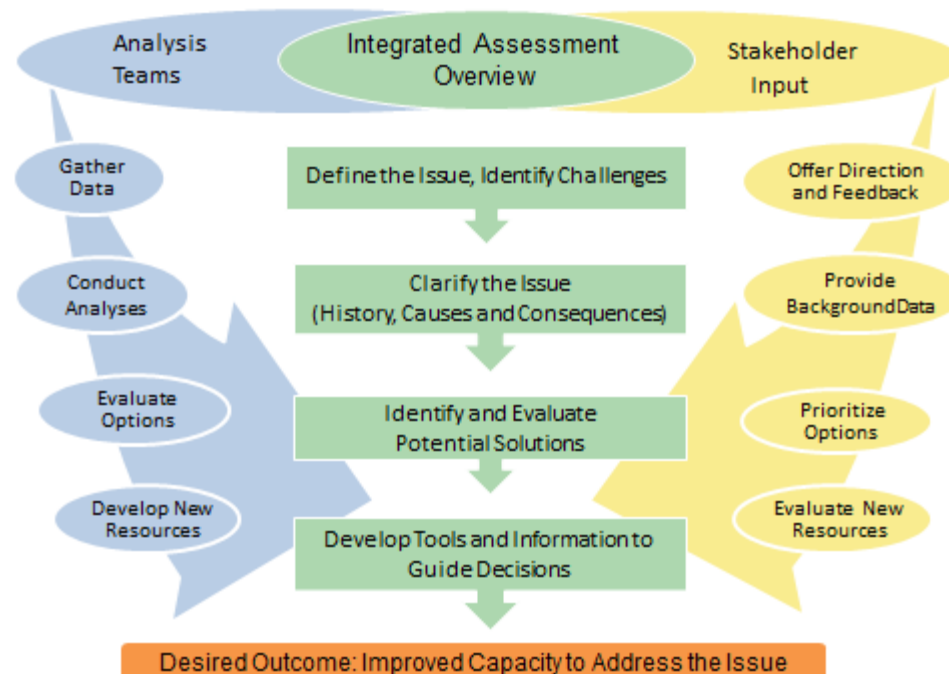
In order to....

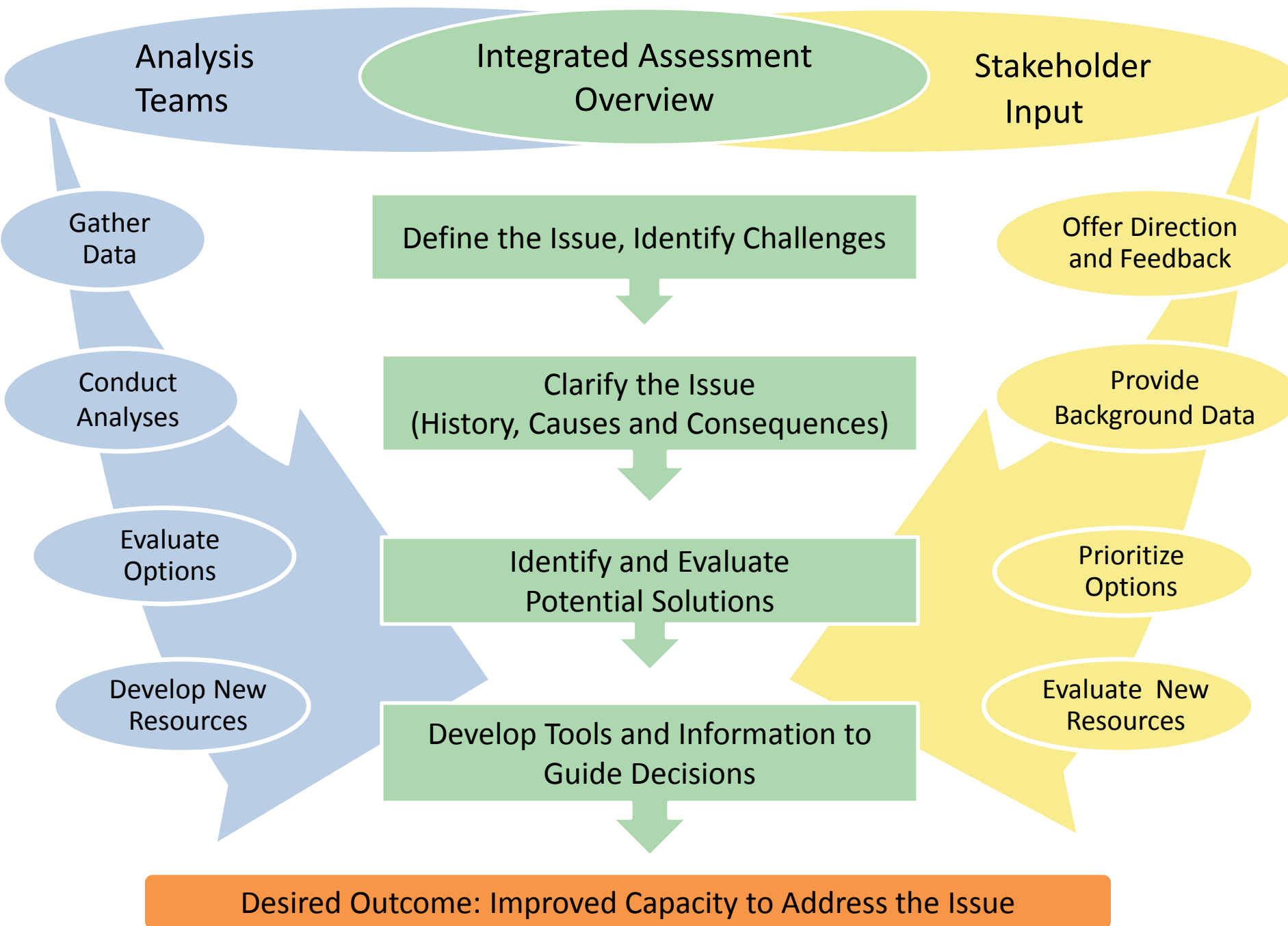
- Build consensus
- Inform decisions



What does the process look like?

- Four core elements (green boxes in graphic)
- Roles for technical specialists and stakeholders (blue & yellow arrows)
- Strong project coordination is essential
- Next few slides illustrate the process using an example project





Example Project:

What are the Causes, Consequences and Correctives of Fish Contamination in the Detroit River that Cause Health Consumption Advisories?

PI: Donna Kashian, Wayne State University

Funded by Michigan Sea Grant, 2007 - 2010

Example adapted by NERRS Science Collaborative staff



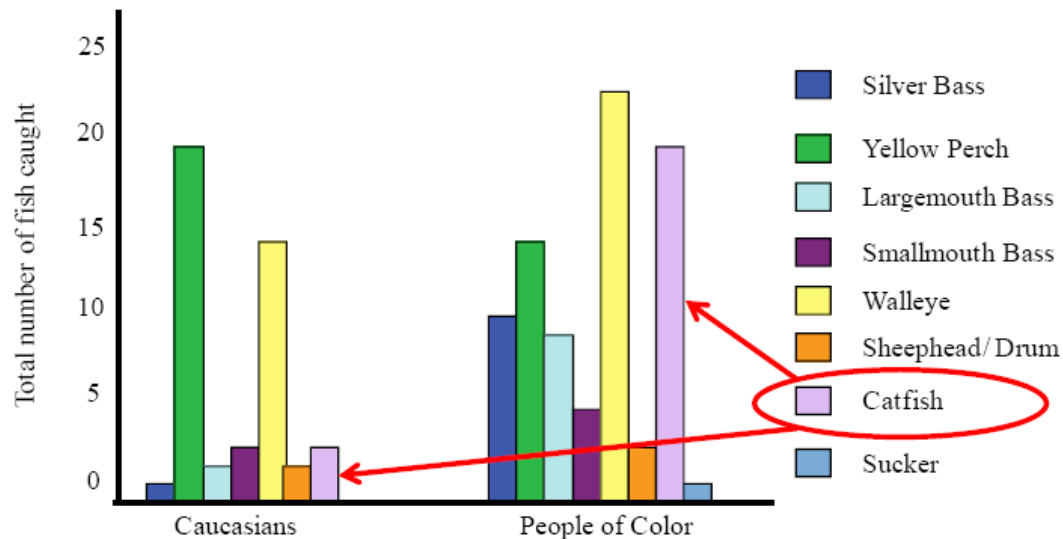
Collaboratively Define the Issue and Identify Challenges

- A diverse project team, including people with expertise in natural science, social science and collaboration
- Broad stakeholder group, including representatives from several state agencies
- Stakeholder interviews and surveys, 3 workshops, several smaller meetings
- Prioritized research needs and identified a variety of obstacles to action



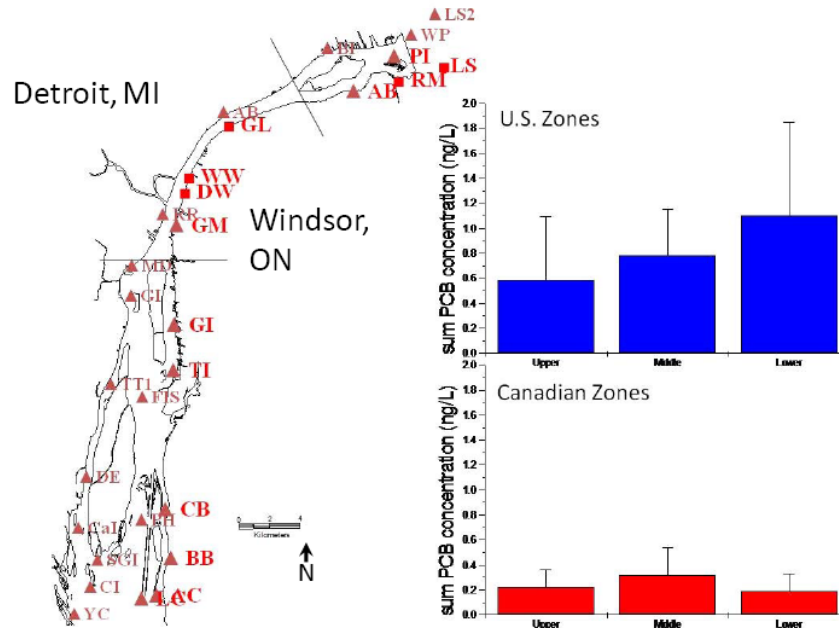
Examine and Clarify the Issue (History, Causes and Consequences)

- Gathered and summarized a range of existing data on fish and sediment contamination
- Conducted interviews with anglers
- Evaluated consequences of current situation, e.g., certain groups are eating highly contaminated fish that are not covered by current advisory
- Identified uncertainties and information gaps



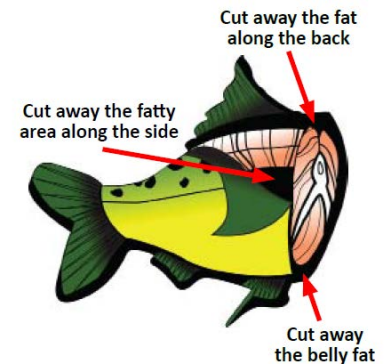
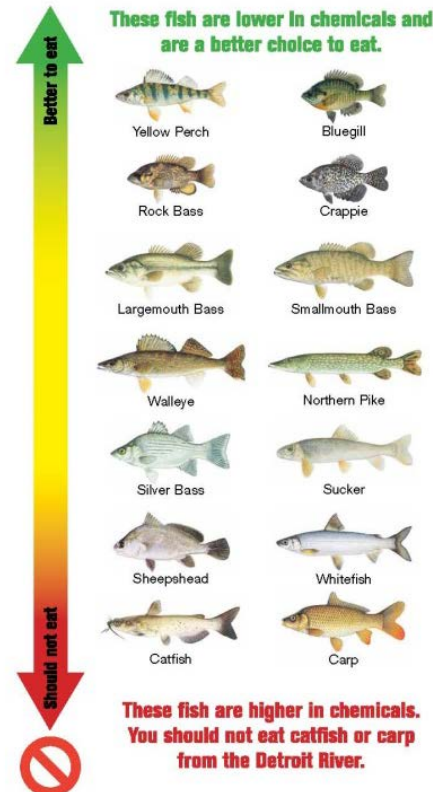
Identify and Evaluate Potential Solutions

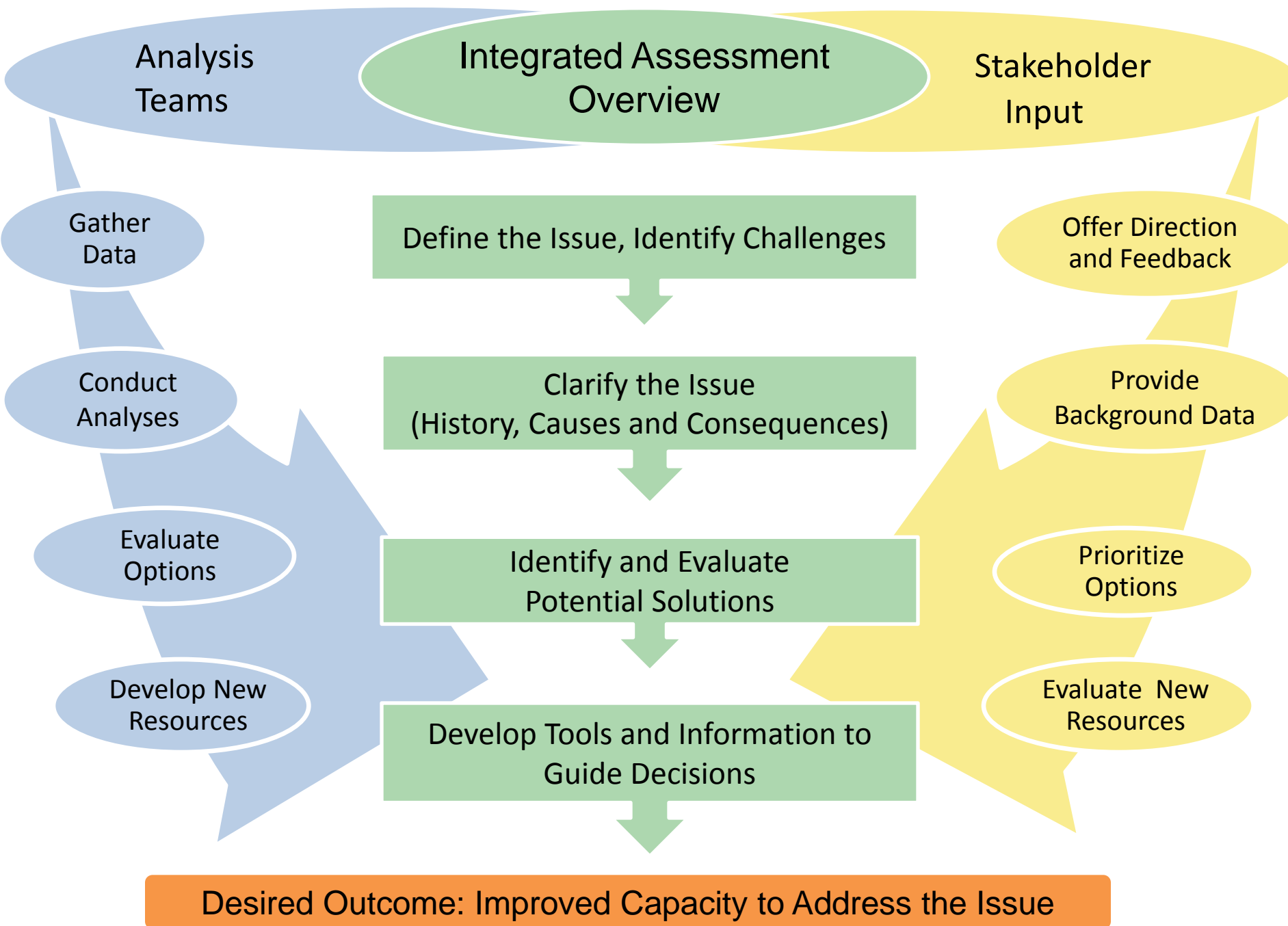
- Compared different approaches for sampling fish, assessing risk and developing advisories.
- Modified existing contaminant bioaccumulation models. Modeling estimated that 73% of PCBs in fish are from legacy pollution, mostly on U.S. side, but some on-going inputs of PCB to river are likely.



Develop Tools and Information to Guide Decisions

- Predicted risks for untested fish species
- With leadership from stakeholder committee, developed new communication tools to target vulnerable anglers, posted new signs, developed brochures





What Resulted from the Assessment?

- Project stakeholders posted 30 new signs along Detroit River.
- The state has revised their system for developing and communicating fish consumption guidelines.
- Project PI continues to work with stakeholder groups and has secured several large, related grants.

More Information about this Assessment

- Michigan Sea Grant project webpage, [LINK](#)
- Journal article: Capacity building in stakeholders around Detroit River fish consumption advisory issues, [LINK](#)
- New Michigan Eat Safe Fish Program, [LINK](#)



PI: Donna Kashian, Wayne State University
Funded by Michigan Sea Grant, 2007 - 2010



Tangible and Intangible Benefits

Quotes from Participants

New Relationships

“Those meetings brought together a lot of people who I hadn’t had contact with before. **It got people talking**.... Anytime you can get multiple people together from different jurisdictions it is a positive thing.”

--- Participant, Friends of the Detroit River

New Information

“We now have a much better idea about who is eating what from the Detroit River. I’m glad to have access to the report and **have referred to it many times**.”

--- Participant, US EPA

New Tools, New Ideas

“It was a **new approach** to tailor fish consumption information to specific audiences and water bodies.”

--- Participant, U.S. EPA

“The one-page info sheets on fish consumption **have been really useful**. We have been making them available in health centers.”

--- Participant, City of Detroit Health Department

New Resources and Opportunities

“MDCH had a small pot of money.... It would have been very difficult to **realize the maximum potential** of those funds without the support of the stakeholder group.”

--- Participant, MDCH

“The project helped leverage resources in a huge way.... We worked with MDCH to prepare two proposals that **received \$850,000 from GLRI**.”

--- Participant, Wayne State University

More information about Integrated Assessment

Reports

- An Integrated Assessment Primer, [LINK](#)
- Benefits of Integrated Assessment, [LINK](#)

Other Example Projects

- The Integrated Assessment Center, Graham Sustainability Institute, [LINK](#)
- Michigan Sea Grant, [LINK](#)

IA Funding Information

- NERRS Science Collaborative, [LINK](#)

